

## ARG57030 anti-SSR4 antibody [26G5]

Package: 50 µl  
Store at: -20°C

### Summary

Product Description	Mouse Monoclonal antibody [26G5] recognizes SSR4
Tested Reactivity	Hu
Tested Application	WB
Host	Mouse
Clonality	Monoclonal
Clone	26G5
Isotype	IgG1, kappa
Target Name	SSR4
Species	Human
Immunogen	Recombinant fragment around aa. 24-144 of Human SSR4.
Conjugation	Un-conjugated
Alternate Names	SSR-delta; Translocon-associated protein subunit delta; CDG1Y; Signal sequence receptor subunit delta; TRAPD; TRAP-delta

### Application Instructions

Application table	Application	Dilution
	WB	1:1000

**Application Note** \* The dilutions indicate recommended starting dilutions and the optimal dilutions or concentrations should be determined by the scientist.

### Properties

Form	Liquid
Purification	Purification with Protein A.
Buffer	PBS (pH 7.4), 0.02% Sodium azide and 10% Glycerol.
Preservative	0.02% Sodium azide
Stabilizer	10% Glycerol
Concentration	1 mg/ml
Storage instruction	For continuous use, store undiluted antibody at 2-8°C for up to a week. For long-term storage, aliquot and store at -20°C. Storage in frost free freezers is not recommended. Avoid repeated freeze/thaw cycles. Suggest spin the vial prior to opening. The antibody solution should be gently mixed before use.
Note	For laboratory research only, not for drug, diagnostic or other use.

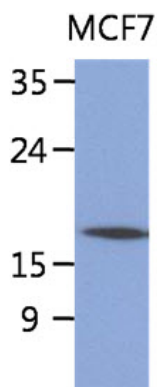
## Bioinformation

---

Database links	<a href="#">GeneID: 6748 Human</a> <a href="#">Swiss-port # P51571 Human</a>
Gene Symbol	SSR4
Gene Full Name	signal sequence receptor, delta
Background	This gene encodes the delta subunit of the translocon-associated protein complex which is involved in translocating proteins across the endoplasmic reticulum membrane. The encoded protein is located in the Xq28 region and is arranged in a compact head-to-head manner with the isocitrate dehydrogenase 3 (NAD+) gamma gene and both genes are driven by a CpG-embedded bidirectional promoter. Alternate splicing results in multiple transcript variants.[provided by RefSeq, Mar 2011]
Function	TRAP proteins are part of a complex whose function is to bind calcium to the ER membrane and thereby regulate the retention of ER resident proteins. [UniProt]
Calculated Mw	19 kDa

## Images

---



ARG57030 anti-SSR4 antibody [26G5] WB image

Western blot: 40 µg of MCF7 cell lysate stained with ARG57030 anti-SSR4 antibody [26G5] at 1:1000.