

ARG57020
anti-KLF7 antibody [3G3]Package: 50 µl
Store at: -20°C

Summary

Product Description	Mouse Monoclonal antibody [3G3] recognizes KLF7
Tested Reactivity	Hu
Tested Application	WB
Host	Mouse
Clonality	Monoclonal
Clone	3G3
Isotype	IgG1, kappa
Target Name	KLF7
Species	Human
Immunogen	Recombinant fragment around aa. 1-302 of Human KLF7.
Conjugation	Un-conjugated
Alternate Names	UKLF; Ubiquitous krueppel-like factor; Krueppel-like factor 7

Application Instructions

Application table	Application	Dilution
	WB	1:1000
Application Note	* The dilutions indicate recommended starting dilutions and the optimal dilutions or concentrations should be determined by the scientist.	

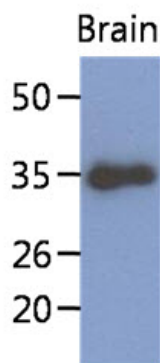
Properties

Form	Liquid
Purification	Purification with Protein A.
Buffer	PBS (pH 7.4), 0.02% Sodium azide and 10% Glycerol.
Preservative	0.02% Sodium azide
Stabilizer	10% Glycerol
Concentration	1 mg/ml
Storage instruction	For continuous use, store undiluted antibody at 2-8°C for up to a week. For long-term storage, aliquot and store at -20°C. Storage in frost free freezers is not recommended. Avoid repeated freeze/thaw cycles. Suggest spin the vial prior to opening. The antibody solution should be gently mixed before use.
Note	For laboratory research only, not for drug, diagnostic or other use.

Bioinformation

Database links	GeneID: 8609 Human Swiss-port # O75840 Human
Gene Symbol	KLF7
Gene Full Name	Kruppel-like factor 7 (ubiquitous)
Background	The protein encoded by this gene is a member of the Kruppel-like transcriptional regulator family. Members in this family regulate cell proliferation, differentiation and survival and contain three C2H2 zinc fingers at the C-terminus that mediate binding to GC-rich sites. This protein may contribute to the progression of type 2 diabetes by inhibiting insulin expression and secretion in pancreatic beta-cells and by deregulating adipocytokine secretion in adipocytes. A pseudogene of this gene is located on the long arm of chromosome 3. Alternative splicing results in multiple transcript variants. [provided by RefSeq, Aug 2012]
Function	Transcriptional activator. Binds in vitro to the CACCC motif of the beta-globin promoter and to the SP1 recognition sequence. [UniProt]
Calculated Mw	33 kDa

Images



ARG57020 anti-KLF7 antibody [3G3] WB image

Western blot: 40 µg of Mouse brain lysate stained with ARG57020 anti-KLF7 antibody [3G3] at 1:1000.