

ARG57003 anti-Cytokeratin 23 antibody [2F6]

Package: 50 µl
Store at: -20°C

Summary

Product Description	Mouse Monoclonal antibody [2F6] recognizes Cytokeratin 23
Tested Reactivity	Hu
Tested Application	FACS, ICC/IF, WB
Host	Mouse
Clonality	Monoclonal
Clone	2F6
Isotype	IgG1, kappa
Target Name	Cytokeratin 23
Species	Human
Immunogen	Recombinant fragment corresponding to aa. 271-422 of Human Cytokeratin 23.
Conjugation	Un-conjugated
Alternate Names	K23; CK23; CK-23; Keratin-23; HAIK1; Cytokeratin-23; Keratin, type I cytoskeletal 23

Application Instructions

Application table	Application	Dilution
	FACS	2 - 5 µg/10 ⁶ cells
	ICC/IF	1:100
	WB	1:500 - 1:3000

Application Note * The dilutions indicate recommended starting dilutions and the optimal dilutions or concentrations should be determined by the scientist.

Properties

Form	Liquid
Purification	Purification with Protein G.
Buffer	PBS (pH 7.4), 0.02% Sodium azide and 10% Glycerol.
Preservative	0.02% Sodium azide
Stabilizer	10% Glycerol
Concentration	1 mg/ml
Storage instruction	For continuous use, store undiluted antibody at 2-8°C for up to a week. For long-term storage, aliquot and store at -20°C. Storage in frost free freezers is not recommended. Avoid repeated freeze/thaw cycles. Suggest spin the vial prior to opening. The antibody solution should be gently mixed before use.

Note

For laboratory research only, not for drug, diagnostic or other use.

Bioinformation

Database links

[GeneID: 25984 Human](#)

[Swiss-port # Q9C075 Human](#)

Gene Symbol

KRT23

Gene Full Name

keratin 23, type I

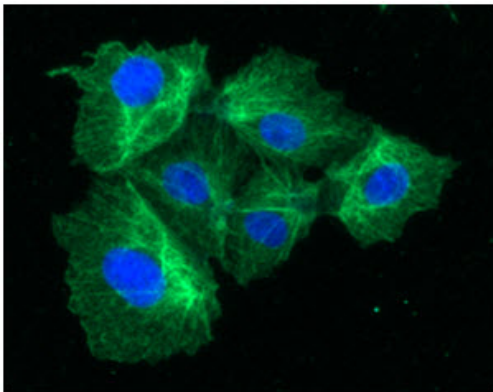
Background

The protein encoded by this gene is a member of the keratin family. The keratins are intermediate filament proteins responsible for the structural integrity of epithelial cells and are subdivided into cytokeratins and hair keratins. The type I cytokeratins consist of acidic proteins which are arranged in pairs of heterotypic keratin chains. The type I cytokeratin genes are clustered in a region of chromosome 17q12-q21. Alternative splicing results in multiple transcript variants. [provided by RefSeq, Sep 2013]

Calculated Mw

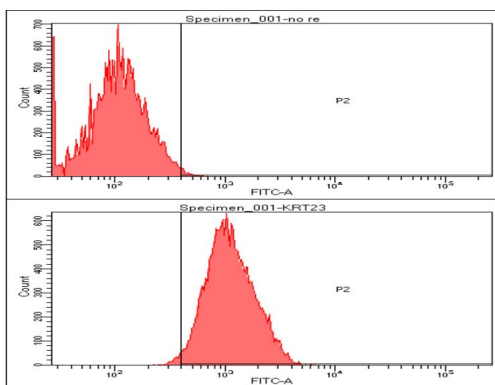
48 kDa

Images



ARG57003 anti-Cytokeratin 23 antibody [2F6] ICC/IF image

Immunofluorescence: Hep3B cells stained with ARG57003 anti-Cytokeratin 23 antibody [2F6] at 1:100 (green). DAPI (blue) for nucleus staining.



ARG57003 anti-Cytokeratin 23 antibody [2F6] FACS image

Flow Cytometry: Hep3B cell line stained with ARG57003 anti-Cytokeratin 23 antibody [2F6] at 2-5 µg for 1x10⁶ cells. Secondary antibody: Goat anti-Mouse IgG Alexa fluor 488 conjugate.

ARG57003 anti-Cytokeratin 23 antibody [2F6] WB image

Western blot: 40 µg of HeLa and HepG2 cell lysates stained with ARG57003 anti-Cytokeratin 23 antibody [2F6] at 1:3000 dilution.

