

ARG56989 anti-TBCA antibody [1A5]

Package: 50 µl
Store at: -20°C

Summary

Product Description	Mouse Monoclonal antibody [1A5] recognizes TBCA
Tested Reactivity	Hu
Tested Application	FACS, WB
Host	Mouse
Clonality	Monoclonal
Clone	1A5
Isotype	IgG2b, kappa
Target Name	TBCA
Species	Human
Immunogen	Recombinant fragment around aa. 1-108 of Human TBCA.
Conjugation	Un-conjugated
Alternate Names	Tubulin-specific chaperone A; Tubulin-folding cofactor A; TCP1-chaperonin cofactor A; CFA

Application Instructions

Application table	Application	Dilution
	FACS	Assay-dependent
	WB	1:1000 - 1:2000
Application Note	* The dilutions indicate recommended starting dilutions and the optimal dilutions or concentrations should be determined by the scientist.	

Properties

Form	Liquid
Purification	Purification with Protein G.
Buffer	PBS (pH 7.4), 0.02% Sodium azide and 10% Glycerol.
Preservative	0.02% Sodium azide
Stabilizer	10% Glycerol
Concentration	1 mg/ml
Storage instruction	For continuous use, store undiluted antibody at 2-8°C for up to a week. For long-term storage, aliquot and store at -20°C. Storage in frost free freezers is not recommended. Avoid repeated freeze/thaw cycles. Suggest spin the vial prior to opening. The antibody solution should be gently mixed before use.
Note	For laboratory research only, not for drug, diagnostic or other use.

Bioinformation

Database links [GeneID: 6902 Human](#)
[Swiss-port # O75347 Human](#)

Gene Symbol TBCA

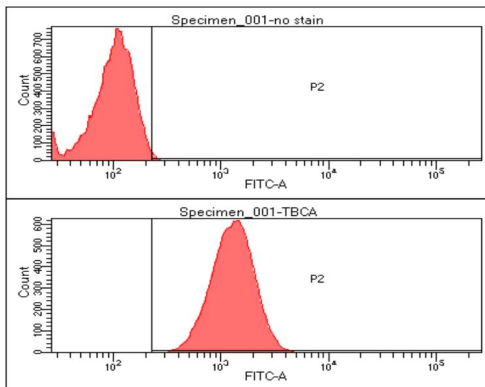
Gene Full Name tubulin folding cofactor A

Background The product of this gene is one of four proteins (cofactors A, D, E, and C) involved in the pathway leading to correctly folded beta-tubulin from folding intermediates. Cofactors A and D are believed to play a role in capturing and stabilizing beta-tubulin intermediates in a quasi-native confirmation. Cofactor E binds to the cofactor D/beta-tubulin complex; interaction with cofactor C then causes the release of beta-tubulin polypeptides that are committed to the native state. This gene encodes chaperonin cofactor A. Multiple alternatively spliced transcript variants encoding different isoforms have been found for this gene. [provided by RefSeq, Jul 2014]

Function Tubulin-folding protein; involved in the early step of the tubulin folding pathway. [UniProt]

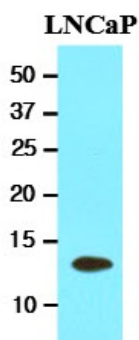
Calculated Mw 13 kDa

Images



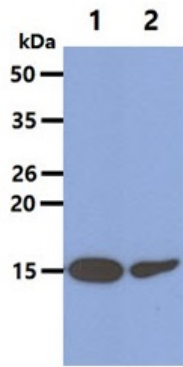
ARG56989 anti-TBCA antibody [1A5] FACS image

Flow Cytometry: HeLa cell line stained with ARG56989 anti-TBCA antibody [1A5] at 2-5 μg for 1×10^6 cells. Secondary antibody: Goat antiMouse IgG Alexa fluor 488 conjugate.



ARG56989 anti-TBCA antibody [1A5] WB image

Western blot: 20 μg of LNCaP cell lysates stained with ARG56989 anti-TBCA antibody [1A5] at 1:1000.



ARG56989 anti-TBCA antibody [1A5] WB image

Western blot: 40 µg of 1) HeLa cell lysate, 2) K562 cell lysate stained with ARG56989 anti-TBCA antibody [1A5] at 1:1000.