

ARG56986 anti-Myosin Light Chain 2 antibody [3B2]

Package: 50 µl
Store at: -20°C

Summary

Product Description	Mouse Monoclonal antibody [3B2] recognizes Myosin Light Chain 2
Tested Reactivity	Hu, Rat
Tested Application	FACS, WB
Host	Mouse
Clonality	Monoclonal
Clone	3B2
Isotype	IgG2b, kappa
Target Name	Myosin Light Chain 2
Species	Human
Immunogen	Recombinant fragment around aa. 1-166 of Human Myosin Light Chain 2.
Conjugation	Un-conjugated
Alternate Names	MLC2; Myosin regulatory light chain 2, ventricular/cardiac muscle isoform; CMH10; MLC-2; MLC-2v

Application Instructions

Application table	Application	Dilution
	FACS	Assay-dependent
	WB	1:1000 - 1:2000
Application Note	* The dilutions indicate recommended starting dilutions and the optimal dilutions or concentrations should be determined by the scientist.	

Properties

Form	Liquid
Purification	Purification with Protein G.
Buffer	PBS (pH 7.4), 0.02% Sodium azide and 10% Glycerol.
Preservative	0.02% Sodium azide
Stabilizer	10% Glycerol
Concentration	1 mg/ml
Storage instruction	For continuous use, store undiluted antibody at 2-8°C for up to a week. For long-term storage, aliquot and store at -20°C. Storage in frost free freezers is not recommended. Avoid repeated freeze/thaw cycles. Suggest spin the vial prior to opening. The antibody solution should be gently mixed before use.
Note	For laboratory research only, not for drug, diagnostic or other use.

Bioinformation

Database links

[GeneID: 363925 Rat](#)

[GeneID: 4633 Human](#)

[Swiss-port # P08733 Rat](#)

[Swiss-port # P10916 Human](#)

Gene Symbol

MYL2

Gene Full Name

myosin, light chain 2, regulatory, cardiac, slow

Background

This gene encodes the regulatory light chain associated with cardiac myosin beta (or slow) heavy chain. Ca⁺ triggers the phosphorylation of regulatory light chain that in turn triggers contraction. Mutations in this gene are associated with mid-left ventricular chamber type hypertrophic cardiomyopathy. [provided by RefSeq, Jul 2008]

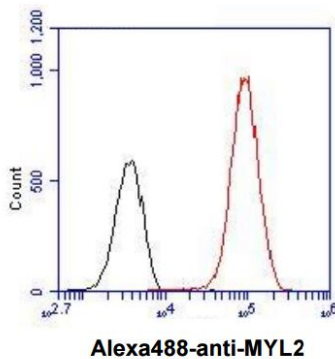
Calculated Mw

19 kDa

PTM

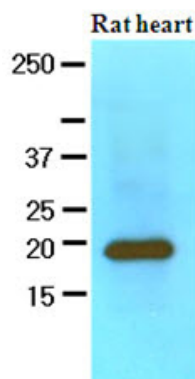
N-terminus is methylated by METTL11A/NTM1. Phosphorylated by MYLK3 and MYLK2; promotes cardiac muscle contraction and function (By similarity). Dephosphorylated by PPP1CB complexed to PPP1R12B (By similarity). The phosphorylated form in adult is expressed as gradients across the heart from endocardium (low phosphorylation) to epicardium (high phosphorylation); regulates cardiac torsion and workload distribution (By similarity).

Images



ARG56986 anti-Myosin Light Chain 2 antibody [3B2] FACS image

Flow Cytometry: A431 cell line stained with ARG56986 anti-Myosin Light Chain 2 antibody [3B2] at 2-5 μ g for 1×10^6 cells (red line). Secondary antibody: Goat anti-Mouse IgG Alexa fluor 488 conjugate. Isotype control antibody was Mouse IgG (black line).



ARG56986 anti-Myosin Light Chain 2 antibody [3B2] WB image

Western blot: 60 μ g of Rat heart stained with ARG56986 anti-Myosin Light Chain 2 antibody [3B2] at 1:1000.