

ARG56963
anti-UBE2L6 antibody [k1H3]Package: 50 µl
Store at: -20°C

Summary

Product Description	Mouse Monoclonal antibody [k1H3] recognizes UBE2L6
Tested Reactivity	Hu
Tested Application	ICC/IF, IHC-P, WB
Host	Mouse
Clonality	Monoclonal
Clone	k1H3
Isotype	IgG2b, kappa
Target Name	UBE2L6
Species	Human
Immunogen	Recombinant fragment around aa. 1-152 of Human UBE2L6.
Conjugation	Un-conjugated
Alternate Names	UbcH8; EC 6.3.2.19; Ubiquitin-protein ligase L6; UBCH8; Ubiquitin/ISG15-conjugating enzyme E2 L6; RIG-B; Ubiquitin carrier protein L6; Retinoic acid-induced gene B protein

Application Instructions

Application table	Application	Dilution
	ICC/IF	Assay-dependent
	IHC-P	1:50
	WB	1:1000 - 1:3000

Application Note IHC-P: Antigen Retrieval: Boil tissue section in 0.1M Sodium citrate buffer (pH 6.0) for 20 min.
* The dilutions indicate recommended starting dilutions and the optimal dilutions or concentrations should be determined by the scientist.

Properties

Form	Liquid
Purification	Purification with Protein G.
Buffer	PBS (pH 7.4), 0.02% Sodium azide and 10% Glycerol.
Preservative	0.02% Sodium azide
Stabilizer	10% Glycerol
Concentration	1 mg/ml
Storage instruction	For continuous use, store undiluted antibody at 2-8°C for up to a week. For long-term storage, aliquot and store at -20°C. Storage in frost free freezers is not recommended. Avoid repeated freeze/thaw cycles. Suggest spin the vial prior to opening. The antibody solution should be gently mixed before use.

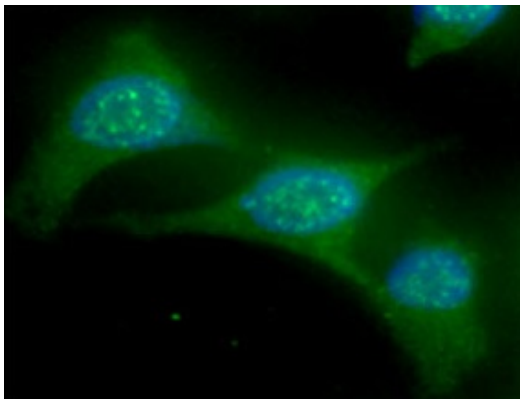
Note

For laboratory research only, not for drug, diagnostic or other use.

Bioinformation

Database links	GeneID: 9246 Human Swiss-port # O14933 Human
Gene Symbol	UBE2L6
Gene Full Name	ubiquitin-conjugating enzyme E2L 6
Background	The modification of proteins with ubiquitin is an important cellular mechanism for targeting abnormal or short-lived proteins for degradation. Ubiquitination involves at least three classes of enzymes: ubiquitin-activating enzymes (E1s), ubiquitin-conjugating enzymes (E2s) and ubiquitin-protein ligases (E3s). This gene encodes a member of the E2 ubiquitin-conjugating enzyme family. This enzyme is highly similar in primary structure to the enzyme encoded by the UBE2L3 gene. Two alternatively spliced transcript variants encoding distinct isoforms have been found for this gene. [provided by RefSeq, May 2011]
Function	Catalyzes the covalent attachment of ubiquitin or ISG15 to other proteins. Functions in the E6/E6-AP-induced ubiquitination of p53/TP53. Promotes ubiquitination and subsequent proteasomal degradation of FLT3. [UniProt]
Calculated Mw	18 kDa
PTM	ISGylated.

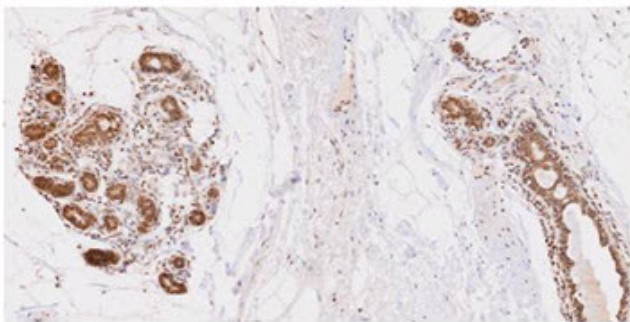
Images



ARG56963 anti-UBE2L6 antibody [k1H3] ICC/IF image

Immunofluorescence: HeLa cell line stained with ARG56963 anti-UBE2L6 antibody [k1H3] at 1:100 (Green).

DAPI (Blue) for nucleus staining.

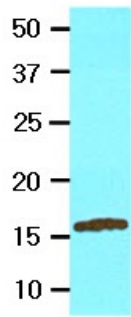


ARG56963 anti-UBE2L6 antibody [k1H3] IHC-P image

Immunohistochemistry: Paraffin embedded sections of Human breast lobule tissue stained with ARG56963 anti-UBE2L6 antibody [k1H3] at 1:50 for 2 hours at RT. Antigen Retrieval: Boil tissue section in 0.1M Sodium citrate buffer (pH 6.0) for 20 min.

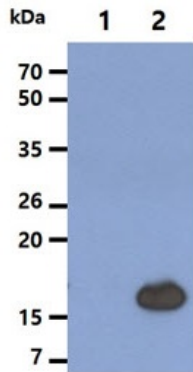
Human breast lobule tissue

MCF7



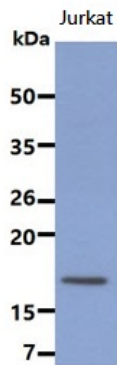
ARG56963 anti-UBE2L6 antibody [k1H3] WB image

Western blot: 20 µg of MCF7 cell lysate stained with ARG56963 anti-UBE2L6 antibody [k1H3] at 1:2000.



ARG56963 anti-UBE2L6 antibody [k1H3] WB image

Western blot: 5 µg of 1) 293T cell lysate, 2) UBE2L6 Transfected 293T cell lysate stained with ARG56963 anti-UBE2L6 antibody [k1H3] at 1:2000.



ARG56963 anti-UBE2L6 antibody [k1H3] WB image

Western blot: 20 µg of Jurkat cell lysate stained with ARG56963 anti-UBE2L6 antibody [k1H3] at 1:2000.