

## ARG56926 anti-KIR2DL1 antibody [2F9]

Package: 50 µl  
Store at: -20°C

### Summary

Product Description	Mouse Monoclonal antibody [2F9] recognizes KIR2DL1
Tested Reactivity	Hu
Tested Application	FACS, WB
Host	Mouse
Clonality	Monoclonal
Clone	2F9
Isotype	IgG2a, kappa
Target Name	KIR2DL1
Species	Human
Immunogen	Recombinant fragment around aa. 23-223 of Human KIR2DL1.
Conjugation	Un-conjugated
Alternate Names	p58.1 MHC class-I-specific NK receptor; NKAT1; Killer cell immunoglobulin-like receptor 2DL1; NKAT-1; p58 natural killer cell receptor clones CL-42/47.11; CD158A; KIR-K64; CD158 antigen-like family member A; p58.1; NKAT; p58 NK receptor CL-42/47.11; MHC class I NK cell receptor; Natural killer-associated transcript 1; CD antigen CD158a; KIR221

### Application Instructions

Application table	Application	Dilution
	FACS	Assay-dependent
	WB	1:500 - 1:2000
Application Note	* The dilutions indicate recommended starting dilutions and the optimal dilutions or concentrations should be determined by the scientist.	

### Properties

Form	Liquid
Purification	Purification with Protein G.
Buffer	PBS (pH 7.4), 0.02% Sodium azide and 10% Glycerol.
Preservative	0.02% Sodium azide
Stabilizer	10% Glycerol
Concentration	1 mg/ml
Storage instruction	For continuous use, store undiluted antibody at 2-8°C for up to a week. For long-term storage, aliquot and store at -20°C. Storage in frost free freezers is not recommended. Avoid repeated freeze/thaw cycles. Suggest spin the vial prior to opening. The antibody solution should be gently mixed before use.

Note

For laboratory research only, not for drug, diagnostic or other use.

## Bioinformation

Database links

[GeneID: 3802 Human](#)

[Swiss-port # P43626 Human](#)

Gene Symbol

KIR2DL1

Gene Full Name

killer cell immunoglobulin-like receptor, two domains, long cytoplasmic tail, 1

Background

Killer cell immunoglobulin-like receptors (KIRs) are transmembrane glycoproteins expressed by natural killer cells and subsets of T cells. The KIR genes are polymorphic and highly homologous and they are found in a cluster on chromosome 19q13.4 within the 1 Mb leukocyte receptor complex (LRC). The gene content of the KIR gene cluster varies among haplotypes, although several "framework" genes are found in all haplotypes (KIR3DL3, KIR3DP1, KIR3DL4, KIR3DL2). The KIR proteins are classified by the number of extracellular immunoglobulin domains (2D or 3D) and by whether they have a long (L) or short (S) cytoplasmic domain. KIR proteins with the long cytoplasmic domain transduce inhibitory signals upon ligand binding via an immune tyrosine-based inhibitory motif (ITIM), while KIR proteins with the short cytoplasmic domain lack the ITIM motif and instead associate with the TYRO protein tyrosine kinase binding protein to transduce activating signals. The ligands for several KIR proteins are subsets of HLA class I molecules; thus, KIR proteins are thought to play an important role in regulation of the immune response. [provided by RefSeq, Jul 2008]

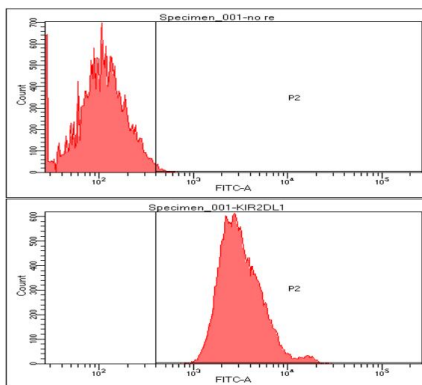
Function

Receptor on natural killer (NK) cells for HLA-C alleles. Inhibits the activity of NK cells thus preventing cell lysis. [UniProt]

Calculated Mw

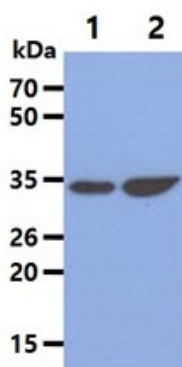
39 kDa

## Images



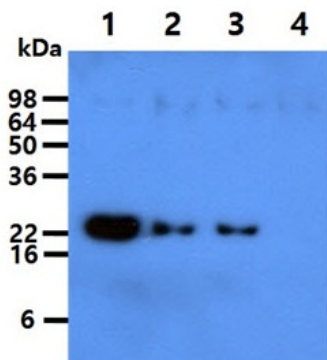
ARG56926 anti-KIR2DL1 antibody [2F9] FACS image

Flow Cytometry: Hep3B cell line stained with ARG56926 anti-KIR2DL1 antibody [2F9] at 2-5  $\mu$ g for  $1 \times 10^6$  cells. Secondary antibody: Goat anti-Mouse IgG Alexa fluor 488 conjugate.



ARG56926 anti-KIR2DL1 antibody [2F9] WB image

Western blot: 40  $\mu$ g of 1) HepG2 cell lysate, 2) Jurkat cell lysate stained with ARG56926 anti-KIR2DL1 antibody [2F9] at 1:1000.



ARG56926 anti-KIR2DL1 antibody [2F9] WB image

Western blot: 50 ng of 1) KIR2DL1, 2) KIR2DL3, 3) KIR2DS4, and 4) KIR2DL4 Recombinant proteins stained with ARG56926 anti-KIR2DL1 antibody [2F9] at 1:500.