

ARG56891 anti-SERPINF1 / PEDF antibody

Package: 100 µl
Store at: -20°C

Summary

Product Description	Rabbit Polyclonal antibody recognizes SERPINF1 / PEDF
Tested Reactivity	Hu, Ms
Tested Application	WB
Host	Rabbit
Clonality	Polyclonal
Isotype	IgG
Target Name	SERPINF1 / PEDF
Species	Human
Immunogen	Recombinant fusion protein corresponding to aa. 1-200 of Human SERPINF1 / PEDF (NP_002606.3).
Conjugation	Un-conjugated
Alternate Names	OI12; Pigment epithelium-derived factor; Cell proliferation-inducing gene 35 protein; Serpin F1; EPC-1; PEDF; PIG35; OI6

Application Instructions

Application table	Application	Dilution
	WB	1:500 - 1:2000
Application Note	* The dilutions indicate recommended starting dilutions and the optimal dilutions or concentrations should be determined by the scientist.	
Positive Control	Mouse kidney and A375	
Observed Size	53 kDa	

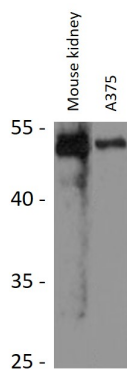
Properties

Form	Liquid
Purification	Affinity purified.
Buffer	PBS (pH 7.3), 0.02% Sodium azide and 50% Glycerol.
Preservative	0.02% Sodium azide
Stabilizer	50% Glycerol
Storage instruction	For continuous use, store undiluted antibody at 2-8°C for up to a week. For long-term storage, aliquot and store at -20°C. Storage in frost free freezers is not recommended. Avoid repeated freeze/thaw cycles. Suggest spin the vial prior to opening. The antibody solution should be gently mixed before use.
Note	For laboratory research only, not for drug, diagnostic or other use.

Bioinformation

Gene Symbol	SERPINF1
Gene Full Name	serpin peptidase inhibitor, clade F (alpha-2 antiplasmin, pigment epithelium derived factor), member 1
Background	The protein encoded by this gene is a member of the serpin family, although it does not display the serine protease inhibitory activity shown by many of the other serpin family members. The encoded protein is secreted and strongly inhibits angiogenesis. In addition, this protein is a neurotrophic factor involved in neuronal differentiation in retinoblastoma cells.[provided by RefSeq, Mar 2011]
Function	Neurotrophic protein; induces extensive neuronal differentiation in retinoblastoma cells. Potent inhibitor of angiogenesis. As it does not undergo the S (stressed) to R (relaxed) conformational transition characteristic of active serpins, it exhibits no serine protease inhibitory activity. [UniProt]
Calculated Mw	46 kDa
PTM	The N-terminus is blocked. Extracellular phosphorylation enhances antiangiogenic activity. N- and O-glycosylated. O-glycosylated with a core 1 or possibly core 8 glycan. [UniProt]
Cellular Localization	Secreted. Melanosome. Note=Enriched in stage I melanosomes. [UniProt]

Images



ARG56891 anti-SERPINF1 / PEDF antibody WB image

Western blot: 25 µg of Mouse kidney and A375 cell lysates stained with ARG56891 anti-SERPINF1 / PEDF antibody at 1:1000 dilution.