

ARG56858 anti-Filamin C antibody

Package: 50 µl
Store at: -20°C

Summary

Product Description	Rabbit Polyclonal antibody recognizes Filamin C
Tested Reactivity	Hu
Predict Reactivity	Ms, Rat, Cow, Dog, Gpig, Hrs, Rb, Zfsh
Tested Application	WB
Host	Rabbit
Clonality	Polyclonal
Isotype	IgG
Target Name	Filamin C
Species	Human
Immunogen	Synthetic peptide around the N-terminus of Human Filamin C. (VGKSADFVVEAIGTEVGTGFSIEGPSQAKIECDDKGDGSCDVRYPTEP)
Conjugation	Un-conjugated
Alternate Names	ABP-280; FLNc; FLN2; Filamin-C; Gamma-filamin; ABP-280-like protein; ABPL; MPD4; Actin-binding-like protein; FLN-C; ABP280A; Filamin-2; MFM5; ABPA; ABP-L

Application Instructions

Application table	Application	Dilution
	WB	1.0 µg/ml
Application Note	* The dilutions indicate recommended starting dilutions and the optimal dilutions or concentrations should be determined by the scientist.	
Positive Control	HepG2 whole cell	

Properties

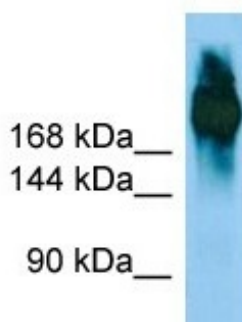
Form	Liquid
Purification	Affinity purified.
Buffer	PBS, 0.09% (w/v) Sodium azide and 2% Sucrose.
Preservative	0.09% (w/v) Sodium azide
Stabilizer	2% Sucrose
Concentration	0.5 - 1 mg/ml
Storage instruction	For continuous use, store undiluted antibody at 2-8°C for up to a week. For long-term storage, aliquot and store at -20°C or below. Storage in frost free freezers is not recommended. Avoid repeated freeze/thaw cycles. Suggest spin the vial prior to opening. The antibody solution should be gently mixed before use.

Note For laboratory research only, not for drug, diagnostic or other use.

Bioinformation

Database links	GeneID: 2318 Human Swiss-port # Q14315 Human
Gene Symbol	FLNC
Gene Full Name	filamin C, gamma
Background	This gene encodes one of three related filamin genes, specifically gamma filamin. These filamin proteins crosslink actin filaments into orthogonal networks in cortical cytoplasm and participate in the anchoring of membrane proteins for the actin cytoskeleton. Three functional domains exist in filamin: an N-terminal filamentous actin-binding domain, a C-terminal self-association domain, and a membrane glycoprotein-binding domain. Two transcript variants encoding different isoforms have been found for this gene. [provided by RefSeq, Jul 2008]
Function	Muscle-specific filamin, which plays a central role in muscle cells, probably by functioning as a large actin-cross-linking protein. May be involved in reorganizing the actin cytoskeleton in response to signaling events, and may also display structural functions at the Z lines in muscle cells. Critical for normal myogenesis and for maintaining the structural integrity of the muscle fibers. [UniProt]
Calculated Mw	291 kDa
PTM	Ubiquitinated by FBXL22, leading to proteasomal degradation.

Images



ARG56858 anti-Filamin C antibody WB image

Western blot: HepG2 whole cell lysate stained with ARG56858 anti-Filamin C antibody at 1.0 µg/ml dilution.