

ARG56834 anti-LRG1 antibody

Package: 50 µl
Store at: -20°C

Summary

Product Description	Rabbit Polyclonal antibody recognizes LRG1
Tested Reactivity	Hu
Tested Application	WB
Host	Rabbit
Clonality	Polyclonal
Isotype	IgG
Target Name	LRG1
Species	Human
Immunogen	Synthetic peptide corresponding to aa. 304-333 of Human LRG1.
Conjugation	Un-conjugated
Alternate Names	HMFT1766; Leucine-rich alpha-2-glycoprotein; LRG

Application Instructions

Application table	Application	Dilution
	WB	1:1000
Application Note	* The dilutions indicate recommended starting dilutions and the optimal dilutions or concentrations should be determined by the scientist.	
Positive Control	Human blood plasma	

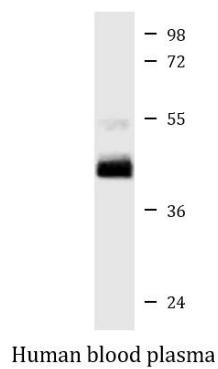
Properties

Form	Liquid
Purification	Purified.
Buffer	PBS (pH 7.4), 150mM NaCl, 0.02% Sodium azide and 50% Glycerol.
Preservative	0.02% Sodium azide
Stabilizer	50% Glycerol
Storage instruction	For continuous use, store undiluted antibody at 2-8°C for up to a week. For long-term storage, aliquot and store at -20°C. Storage in frost free freezers is not recommended. Avoid repeated freeze/thaw cycles. Suggest spin the vial prior to opening. The antibody solution should be gently mixed before use.
Note	For laboratory research only, not for drug, diagnostic or other use.

Bioinformation

Database links	GeneID: 116844 Human Swiss-port # P02750 Human
Gene Symbol	LRG1
Gene Full Name	leucine-rich alpha-2-glycoprotein 1
Background	The leucine-rich repeat (LRR) family of proteins, including LRG1, have been shown to be involved in protein-protein interaction, signal transduction, and cell adhesion and development. LRG1 is expressed during granulocyte differentiation (O'Donnell et al., 2002 [PubMed 12223515]). [supplied by OMIM, Mar 2008]
Calculated Mw	38 kDa

Images



ARG56834 anti-LRG1 antibody WB image

Western blot: 35 µg of Human blood plasma lysate stained with ARG56834 anti-LRG1 antibody at 1:1000 dilution.