

ARG56760
anti-CCL3 / MIP1 alpha antibody (Biotin)Package: 50 µg
Store at: 4°C

Summary

Product Description	Biotin-conjugated Rabbit Polyclonal antibody recognizes CCL3 / MIP1 alpha
Tested Reactivity	Ms
Tested Application	ELISA, WB
Host	Rabbit
Clonality	Polyclonal
Isotype	IgG
Target Name	CCL3 / MIP1 alpha
Species	Mouse
Immunogen	E.coli derived Recombinant Mouse MIP-1α (CCL3). (APYGADTPTA CCFYSYRKIP RQFIVDYFET SSLCSQPGVI FLTKRNRQIC ADSKETWVQE YITDLELNA)
Conjugation	Biotin
Alternate Names	MIP-1-alpha; SIS-beta; PAT 464.1; Tonsillar lymphocyte LD78 alpha protein; G0/G1 switch regulatory protein 19-1; Small-inducible cytokine A3; C-C motif chemokine 3; LD78-alpha; 4-69; Macrophage inflammatory protein 1-alpha; MIP1A; SCYA3; G0S19-1; LD78ALPHA

Application Instructions

Application table	Application	Dilution
	ELISA	Direct: 0.25 - 1.0 µg/ml Sandwich: 0.25 - 1.0 µg/ml with ARG56649 as a capture antibody
	WB	0.1 - 0.2 µg/ml

Application Note * The dilutions indicate recommended starting dilutions and the optimal dilutions or concentrations should be determined by the scientist.

Properties

Form	Liquid
Purification	Purified by affinity chromatography.
Buffer	PBS (pH 7.2)
Concentration	1 mg/ml
Storage instruction	Aliquot and store in the dark at 2-8°C. Keep protected from prolonged exposure to light. Avoid repeated freeze/thaw cycles. Suggest spin the vial prior to opening. The antibody solution should be gently mixed before use.
Note	For laboratory research only, not for drug, diagnostic or other use.

Bioinformation

Database links

[GeneID: 20302 Mouse](#)

[Swiss-port # P10855 Mouse](#)

Gene Symbol

Ccl3

Gene Full Name

chemokine (C-C motif) ligand 3

Background

This locus represents a small inducible cytokine. The encoded protein, also known as macrophage inflammatory protein 1 alpha, plays a role in inflammatory responses through binding to the receptors CCR1, CCR4 and CCR5. Polymorphisms at this locus may be associated with both resistance and susceptibility to infection by human immunodeficiency virus type 1.[provided by RefSeq, Sep 2010]

Function

Monokine with inflammatory and chemokinetic properties. Binds to CCR1, CCR4 and CCR5. One of the major HIV-suppressive factors produced by CD8+ T-cells. Recombinant MIP-1-alpha induces a dose-dependent inhibition of different strains of HIV-1, HIV-2, and simian immunodeficiency virus (SIV). [UniProt]

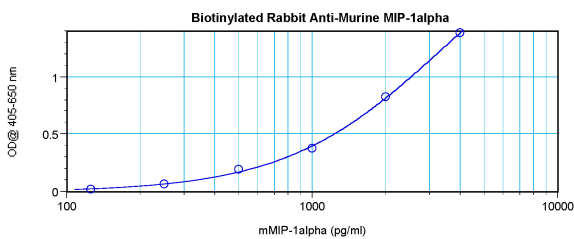
Calculated Mw

10 kDa

PTM

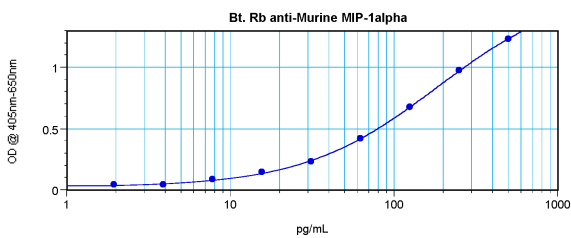
N-terminal processed form LD78-alpha(4-69) is produced by proteolytic cleavage after secretion from HTLV1-transformed T-cells.

Images



ARG56760 anti-CCL3 / MIP1 alpha antibody (Biotin) standard curve image

Direct ELISA: ARG56760 anti-CCL3 / MIP1 alpha antibody (Biotin) at 0.25 - 1.0 $\mu\text{g/ml}$ results of a typical standard run with optical density.



ARG56760 anti-CCL3 / MIP1 alpha antibody (Biotin) standard curve image

Sandwich ELISA: ARG56760 anti-CCL3 / MIP1 alpha antibody (Biotin) as a detection antibody at 0.25 - 1.0 $\mu\text{g/ml}$ combined with ARG56649 anti-MIP1 alpha / CCL3 antibody as a capture antibody. Results of a typical standard run with optical density.