

ARG56746
anti-CXCL1 / GRO alpha antibody (Biotin)Package: 50 µg
Store at: 4°C

Summary

Product Description	Biotin-conjugated Rabbit Polyclonal antibody recognizes CXCL1 / GRO alpha
Tested Reactivity	Ms
Tested Application	ELISA, WB
Host	Rabbit
Clonality	Polyclonal
Isotype	IgG
Target Name	CXCL1 / GRO alpha
Species	Mouse
Immunogen	E.coli derived Recombinant Mouse CXCL1. (APIANELRCQ CLQTMAGIHL KNIQSLKVLP SGPHTCTQTEV IATLKNRGREA CLDPEAPLVQ KIVQKMLKGV PK)
Conjugation	Biotin
Alternate Names	Growth-regulated alpha protein; SCYB1; Melanoma growth stimulatory activity; MGSA-a; GRO-alpha; GROa; NAP-3; FSP; C-X-C motif chemokine 1; Neutrophil-activating protein 3; GRO1; MGSA; IL-8 homologues (murine)

Application Instructions

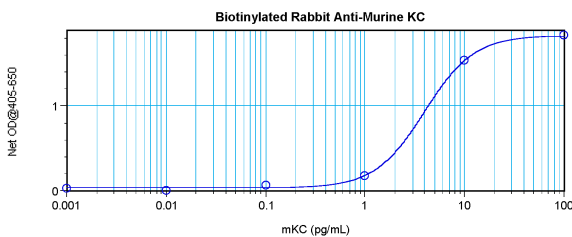
Application table	Application	Dilution
	ELISA	Direct: 0.25 - 1.0 µg/ml Sandwich: 0.25 - 1.0 µg/ml with ARG56636 as a capture antibody
	WB	0.1 - 0.2 µg/ml
Application Note	* The dilutions indicate recommended starting dilutions and the optimal dilutions or concentrations should be determined by the scientist.	

Properties

Form	Liquid
Purification	Purified by affinity chromatography.
Buffer	PBS (pH 7.2)
Concentration	1 mg/ml
Storage instruction	Aliquot and store in the dark at 2-8°C. Keep protected from prolonged exposure to light. Avoid repeated freeze/thaw cycles. Suggest spin the vial prior to opening. The antibody solution should be gently mixed before use.
Note	For laboratory research only, not for drug, diagnostic or other use.

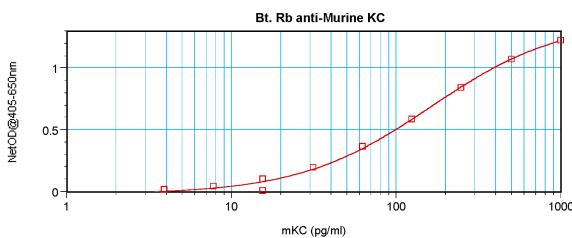
Database links	GeneID: 12310 Mouse Swiss-port # Q99JA0 Mouse
Gene Symbol	CXCL1
Gene Full Name	C-X-C motif chemokine ligand 1
Background	This antimicrobial gene encodes a member of the CXC subfamily of chemokines. The encoded protein is a secreted growth factor that signals through the G-protein coupled receptor, CXC receptor 2. This protein plays a role in inflammation and as a chemoattractant for neutrophils. Aberrant expression of this protein is associated with the growth and progression of certain tumors. A naturally occurring processed form of this protein has increased chemotactic activity. Alternate splicing results in coding and non-coding variants of this gene. A pseudogene of this gene is found on chromosome 4. [provided by RefSeq, Sep 2014]
Function	Has chemotactic activity for neutrophils. May play a role in inflammation and exerts its effects on endothelial cells in an autocrine fashion. In vitro, the processed forms GRO-alpha(4-73), GRO-alpha(5-73) and GRO-alpha(6-73) show a 30-fold higher chemotactic activity. [UniProt]
Calculated Mw	11 kDa
PTM	N-terminal processed forms GRO-alpha(4-73), GRO-alpha(5-73) and GRO-alpha(6-73) are produced by proteolytic cleavage after secretion from peripheral blood monocytes. [UniProt]

Images



ARG56746 anti-CXCL1 / GRO alpha antibody (Biotin) standard curve image

Direct ELISA: ARG56746 anti-CXCL1 / GRO alpha antibody (Biotin) at 0.25 - 1.0 µg/ml results of a typical standard run with optical density.



ARG56746 anti-CXCL1 / GRO alpha antibody (Biotin) standard curve image

Sandwich ELISA: ARG56746 anti-CXCL1 / GRO alpha antibody (Biotin) as a detection antibody at 0.25 - 1.0 µg/ml combined with ARG56636 anti-CXCL1 (GRO alpha) antibody as a capture antibody. Results of a typical standard run with optical density.