

ARG56744
anti-CCL21 / Exodus 2 antibody (Biotin)Package: 50 µg
Store at: 4°C

Summary

Product Description	Biotin-conjugated Rabbit Polyclonal antibody recognizes CCL21 / Exodus 2
Tested Reactivity	Hu
Tested Application	ELISA, WB
Host	Rabbit
Clonality	Polyclonal
Isotype	IgG
Target Name	CCL21 / Exodus 2
Species	Human
Immunogen	E.coli derived Recombinant Human Exodus2. (SDGGAQDCCL KYSQRKIPAK VVRSYRKQEP SLGCSIPAIL FLPRKRSQAE LCADPKELWV QQLMQHLDKT PSPQKPAQGC RKDRGASKTG KKGKGSKGCR KTERSQTPKG P)
Conjugation	Biotin
Alternate Names	TCA4; Small-inducible cytokine A21; Beta-chemokine exodus-2; ECL; SCYA21; Secondary lymphoid-tissue chemokine; CKb9; 6Ckine; C-C motif chemokine 21; SLC

Application Instructions

Application table	Application	Dilution
	ELISA	Direct: 0.25 - 1.0 µg/ml Sandwich: 0.25 - 1.0 µg/ml with ARG56634 as a capture antibody
	WB	0.1 - 0.2 µg/ml
Application Note	* The dilutions indicate recommended starting dilutions and the optimal dilutions or concentrations should be determined by the scientist.	

Properties

Form	Liquid
Purification	Purified by affinity chromatography.
Buffer	PBS (pH 7.2)
Concentration	1 mg/ml
Storage instruction	Aliquot and store in the dark at 2-8°C. Keep protected from prolonged exposure to light. Avoid repeated freeze/thaw cycles. Suggest spin the vial prior to opening. The antibody solution should be gently mixed before use.
Note	For laboratory research only, not for drug, diagnostic or other use.

Database links

[GeneID: 6366 Human](#)

[Swiss-port # O00585 Human](#)

Gene Symbol

CCL21

Gene Full Name

chemokine (C-C motif) ligand 21

Background

This antimicrobial gene is one of several CC cytokine genes clustered on the p-arm of chromosome 9. Cytokines are a family of secreted proteins involved in immunoregulatory and inflammatory processes. The CC cytokines are proteins characterized by two adjacent cysteines. Similar to other chemokines the protein encoded by this gene inhibits hemopoiesis and stimulates chemotaxis. This protein is chemotactic in vitro for thymocytes and activated T cells, but not for B cells, macrophages, or neutrophils. The cytokine encoded by this gene may also play a role in mediating homing of lymphocytes to secondary lymphoid organs. It is a high affinity functional ligand for chemokine receptor 7 that is expressed on T and B lymphocytes and a known receptor for another member of the cytokine family (small inducible cytokine A19). [provided by RefSeq, Sep 2014]

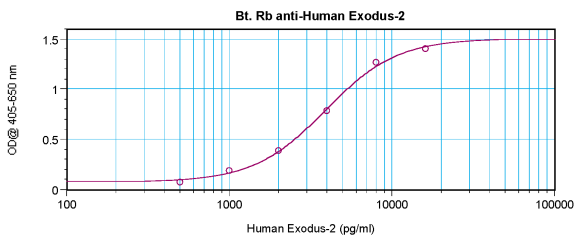
Function

Inhibits hemopoiesis and stimulates chemotaxis. Chemotactic in vitro for thymocytes and activated T-cells, but not for B-cells, macrophages, or neutrophils. Shows preferential activity towards naive T-cells. May play a role in mediating homing of lymphocytes to secondary lymphoid organs. Binds to atypical chemokine receptor ACKR4 and mediates the recruitment of beta-arrestin (ARRB1/2) to ACKR4. [UniProt]

Calculated Mw

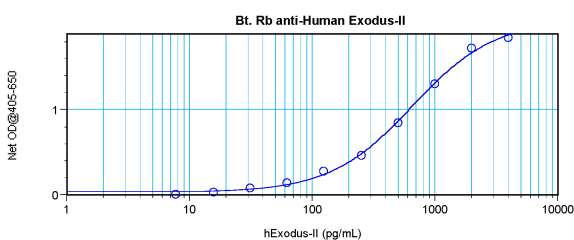
15 kDa

Images



ARG56744 anti-CCL21 / Exodus 2 antibody (Biotin) standard curve image

Direct ELISA: ARG56744 anti-CCL21 / Exodus 2 antibody (Biotin) at 0.25 - 1.0 $\mu\text{g/ml}$ results of a typical standard run with optical density.



ARG56744 anti-CCL21 / Exodus 2 antibody (Biotin) standard curve image

Sandwich ELISA: ARG56744 anti-CCL21 / Exodus 2 antibody (Biotin) as a detection antibody at 0.25 - 1.0 $\mu\text{g/ml}$ combined with ARG56634 anti-CCL21 / Exodus2 antibody as a capture antibody. Results of a typical standard run with optical density.