

ARG56743 anti-CCL21 / Exodus 2 antibody (Biotin)

Package: 50 µg
Store at: 4°C

Summary

Product Description	Biotin-conjugated Rabbit Polyclonal antibody recognizes CCL21 / Exodus 2
Tested Reactivity	Ms
Tested Application	ELISA, WB
Host	Rabbit
Clonality	Polyclonal
Isotype	IgG
Target Name	CCL21 / Exodus 2
Species	Mouse
Immunogen	E.coli derived Recombinant Mouse Exodus2. (SDGGGQDCCL KYSQKKIPYS IVRGYRKQEP SLGCPAIL FLPRKHSKPE LKANPEEGWV QNLMRRLDQP PAPGKQSPGC RKNRGTSKSG KKGKGSKGCK RTEQTQPSRG)
Conjugation	Biotin
Alternate Names	TCA4; Small-inducible cytokine A21; Beta-chemokine exodus-2; ECL; SCYA21; Secondary lymphoid-tissue chemokine; CKb9; 6Ckine; C-C motif chemokine 21; SLC

Application Instructions

Application table	Application	Dilution
	ELISA	Direct: 0.25 - 1.0 µg/ml Sandwich: 0.25 - 1.0 µg/ml with ARG56633 as a capture antibody
	WB	0.1 - 0.2 µg/ml
Application Note	* The dilutions indicate recommended starting dilutions and the optimal dilutions or concentrations should be determined by the scientist.	

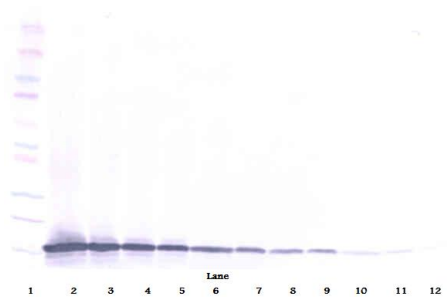
Properties

Form	Liquid
Purification	Purified by affinity chromatography.
Buffer	PBS (pH 7.2)
Concentration	1 mg/ml
Storage instruction	Aliquot and store in the dark at 2-8°C. Keep protected from prolonged exposure to light. Avoid repeated freeze/thaw cycles. Suggest spin the vial prior to opening. The antibody solution should be gently mixed before use.
Note	For laboratory research only, not for drug, diagnostic or other use.

Bioinformation

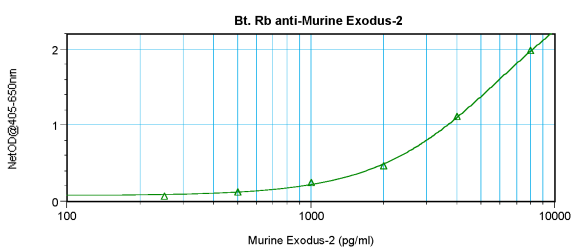
Gene Symbol	Ccl21c
Gene Full Name	chemokine (C-C motif) ligand 21C (leucine)
Background	This antimicrobial gene is one of several CC cytokine genes clustered on the p-arm of chromosome 9. Cytokines are a family of secreted proteins involved in immunoregulatory and inflammatory processes. The CC cytokines are proteins characterized by two adjacent cysteines. Similar to other chemokines the protein encoded by this gene inhibits hemopoiesis and stimulates chemotaxis. This protein is chemotactic in vitro for thymocytes and activated T cells, but not for B cells, macrophages, or neutrophils. The cytokine encoded by this gene may also play a role in mediating homing of lymphocytes to secondary lymphoid organs. It is a high affinity functional ligand for chemokine receptor 7 that is expressed on T and B lymphocytes and a known receptor for another member of the cytokine family (small inducible cytokine A19). [provided by RefSeq, Sep 2014]
Function	Inhibits hemopoiesis and stimulates chemotaxis. Chemotactic in vitro for thymocytes and activated T-cells, but not for B-cells, macrophages, or neutrophils. Shows preferential activity towards naive T-cells. May play a role in mediating homing of lymphocytes to secondary lymphoid organs. Binds to atypical chemokine receptor ACKR4 and mediates the recruitment of beta-arrestin (ARRB1/2) to ACKR4. [UniProt]
Calculated Mw	15 kDa

Images



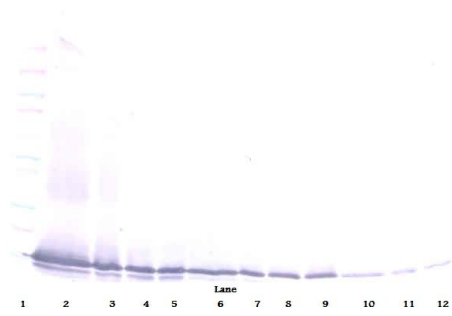
ARG56743 anti-CCL21 / Exodus 2 antibody (Biotin) WB image

Western blot: 250 - 0.24 ng of Mouse Exodus-2 stained with ARG56743 anti-CCL21 / Exodus 2 antibody (Biotin), under reducing conditions.



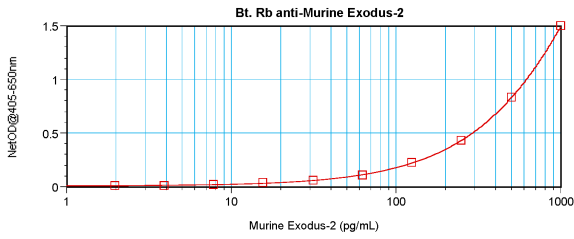
ARG56743 anti-CCL21 / Exodus 2 antibody (Biotin) standard curve image

Direct ELISA: ARG56743 anti-CCL21 / Exodus 2 antibody (Biotin) at 0.25 - 1.0 µg/ml results of a typical standard run with optical density.



ARG56743 anti-CCL21 / Exodus 2 antibody (Biotin) WB image

Western blot: 250 - 0.24 ng of Mouse Exodius-2 stained with ARG56743 anti-CCL21 / Exodus 2 antibody (Biotin), under non-reducing conditions.



ARG56743 anti-CCL21 / Exodus 2 antibody (Biotin) standard curve image

Sandwich ELISA: ARG56743 anti-CCL21 / Exodus 2 antibody (Biotin) as a detection antibody at 0.25 - 1.0 $\mu\text{g}/\text{ml}$ combined with ARG56633 anti-CCL21 / Exodus2 antibody as a capture antibody. Results of a typical standard run with optical density.