

ARG56729 anti-CXCL10 / IP10 antibody (Biotin)

Package: 50 µg
Store at: 4°C

Summary

Product Description	Biotin-conjugated Rabbit Polyclonal antibody recognizes CXCL10 / IP10
Tested Reactivity	Ms
Tested Application	ELISA, WB
Host	Rabbit
Clonality	Polyclonal
Isotype	IgG
Target Name	CXCL10 / IP10
Species	Mouse
Immunogen	E.coli derived Recombinant Mouse IP10 (CXCL10). (IPLARTVRCN CIHIDDGPVR MRAIGKLEII PASLSCPVE IATMKNDE QRCLNPESKT IKNLMKAFSQ KRKRAP)
Conjugation	Biotin
Alternate Names	gIP-10; INP10; 10 kDa interferon gamma-induced protein; IP-10; C-X-C motif chemokine 10; 1-73; Small-inducible cytokine B10; IFI10; Gamma-IP10; SCYB10; crg-2; C7; mob-1

Application Instructions

Application table	Application	Dilution
	ELISA	Direct: 0.25 - 1.0 µg/ml Sandwich: 0.25 - 1.0 µg/ml with ARG56615 as a capture antibody
	WB	0.1 - 0.2 µg/ml
Application Note	* The dilutions indicate recommended starting dilutions and the optimal dilutions or concentrations should be determined by the scientist.	

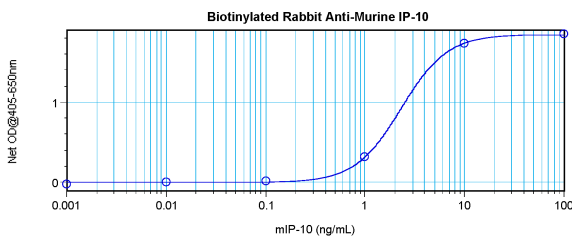
Properties

Form	Liquid
Purification	Purified by affinity chromatography.
Buffer	PBS (pH 7.2)
Concentration	1 mg/ml
Storage instruction	Aliquot and store in the dark at 2-8°C. Keep protected from prolonged exposure to light. Avoid repeated freeze/thaw cycles. Suggest spin the vial prior to opening. The antibody solution should be gently mixed before use.
Note	For laboratory research only, not for drug, diagnostic or other use.

Bioinformation

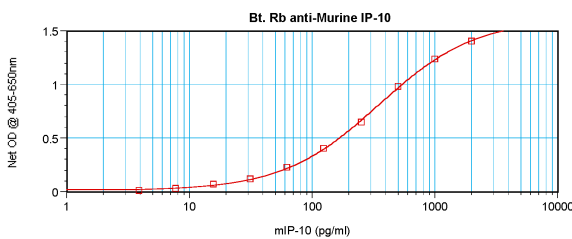
Database links	GeneID: 15945 Mouse Swiss-port # P17515 Mouse
Gene Symbol	Cxcl10
Gene Full Name	chemokine (C-X-C motif) ligand 10
Background	This antimicrobial gene encodes a chemokine of the CXC subfamily and ligand for the receptor CXCR3. Binding of this protein to CXCR3 results in pleiotropic effects, including stimulation of monocytes, natural killer and T-cell migration, and modulation of adhesion molecule expression. [provided by RefSeq, Sep 2014]
Function	Chemotactic for monocytes and T-lymphocytes. Binds to CXCR3. [UniProt]
Highlight	Related products: CXCL10 antibodies ; CXCL10 ELISA Kits ; CXCL10 recombinant proteins ; Anti-Rabbit IgG secondary antibodies ; Related news: circNDUFB2, a circular RNA (circRNA), activates anti-tumor immunity
Calculated Mw	11 kDa
PTM	CXCL10(1-73) is produced by proteolytic cleavage after secretion from keratinocytes.

Images



ARG56729 anti-CXCL10 / IP10 antibody (Biotin) standard curve image

Direct ELISA: ARG56729 anti-CXCL10 / IP10 antibody (Biotin) at 0.25 - 1.0 μ g/ml results of a typical standard run with optical density.



ARG56729 anti-CXCL10 / IP10 antibody (Biotin) standard curve image

Sandwich ELISA: ARG56729 anti-CXCL10 / IP10 antibody (Biotin) as a detection antibody at 0.25 - 1.0 μ g/ml combined with ARG56615 anti-CXCL10 / IP10 antibody as a capture antibody. Results of a typical standard run with optical density.