

ARG56668 anti-IL1 alpha antibody

Package: 50 µg
Store at: -20°C

Summary

Product Description	Goat Polyclonal antibody recognizes IL1 alpha
Tested Reactivity	Rat
Tested Application	ELISA, IHC-Fr, Neut, WB
Host	Goat
Clonality	Polyclonal
Isotype	IgG
Target Name	IL1 alpha
Species	Rat
Immunogen	E.coli derived Recombinant Rat IL-1α. (MAPHSFQNNL RYKLIRIVKQ EFIMNDSLQ NIYVDMDRH LKAASLNDLQ LEVKFDYMYAY SSGGDSKYPV TLKVSNTQLF VSAQGEDKPV LLKEIPETPK LITGSETDLI FFWEKINSKN YFTSAAFPEL LIATKEQSQV HLAGRLPSMI DFQIS)
Conjugation	Un-conjugated
Alternate Names	IL-1 alpha; Interleukin-1 alpha; IL1; IL1F1; Hematopoietin-1; IL1-ALPHA; IL-1A

Application Instructions

Application table	Application	Dilution
	ELISA	Sandwich: 0.5 - 2.0 µg/ml with ARG56778 as a detection antibody
	IHC-Fr	1.0 µg/ml
	Neut	0.011 - 0.017 µg/ml (To yield [ND50] of the biological activity of Rat IL - 1α (50 pg/ml))
	WB	0.1 - 0.2 µg/ml
Application Note	* The dilutions indicate recommended starting dilutions and the optimal dilutions or concentrations should be determined by the scientist.	

Properties

Form	Liquid
Purification	Affinity purification with immunogen.
Buffer	PBS (pH 7.2)
Concentration	1 mg/ml
Storage instruction	For continuous use, store undiluted antibody at 2-8°C for up to a week. For long-term storage, aliquot and store at -20°C or below. Storage in frost free freezers is not recommended. Avoid repeated freeze/thaw cycles. Suggest spin the vial prior to opening. The antibody solution should be gently mixed before use.

Note For laboratory research only, not for drug, diagnostic or other use.

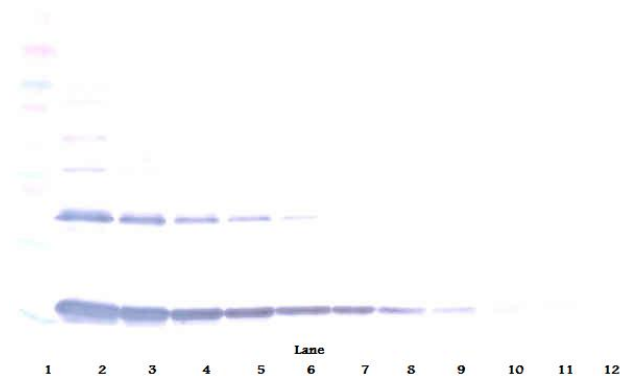
Bioinformation

Database links	GeneID: 24493 Rat Swiss-port # P16598 Rat
Gene Symbol	Il1a
Gene Full Name	interleukin 1 alpha
Background	The protein encoded by this gene is a member of the interleukin 1 cytokine family. This cytokine is a pleiotropic cytokine involved in various immune responses, inflammatory processes, and hematopoiesis. This cytokine is produced by monocytes and macrophages as a proprotein, which is proteolytically processed and released in response to cell injury, and thus induces apoptosis. This gene and eight other interleukin 1 family genes form a cytokine gene cluster on chromosome 2. It has been suggested that the polymorphism of these genes is associated with rheumatoid arthritis and Alzheimer's disease. [provided by RefSeq, Jul 2008]
Function	Produced by activated macrophages, IL-1 stimulates thymocyte proliferation by inducing IL-2 release, B-cell maturation and proliferation, and fibroblast growth factor activity. IL-1 proteins are involved in the inflammatory response, being identified as endogenous pyrogens, and are reported to stimulate the release of prostaglandin and collagenase from synovial cells. [UniProt]
Highlight	Related products: IL1 alpha antibodies ; IL1 alpha ELISA Kits ; IL1 alpha recombinant proteins ; Anti-Goat IgG secondary antibodies ; Related news: HMGB1 in inflammation Inflammatory Cytokines
Calculated Mw	31 kDa

Images

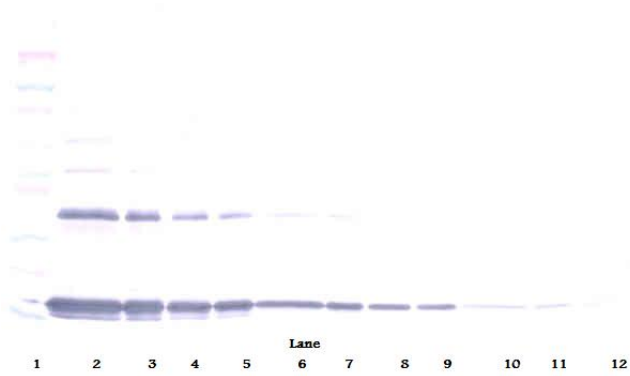
ARG56668 anti-IL1 alpha antibody WB image

Western blot: 250 - 0.24 ng of Rat IL-1 α stained with ARG56668 anti-IL1 alpha antibody, under reducing conditions.



ARG56668 anti-IL1 alpha antibody WB image

Western blot: 250 - 0.24 ng of Rat IL-1 α stained with ARG56668 anti-IL1 alpha antibody, under non-reducing conditions.



ARG56668 anti-IL1 alpha antibody standard curve image

Sandwich ELISA: ARG56668 anti-IL1 alpha antibody as a capture antibody at 0.5 - 2.0 μ g/ml combined with ARG56778 anti-IL1 alpha antibody (Biotin) as a detection antibody. Results of a typical standard run with optical density.

