

ARG56564 anti-CRB3 antibody [14F9]

Package: 50 µg
Store at: -20°C

Summary

| | |
|---------------------|--|
| Product Description | Rat Monoclonal antibody [14F9] recognizes CRB3 |
| Tested Reactivity | Hu, Ms |
| Tested Application | ICC/IF, IHC, WB |
| Host | Rat |
| Clonality | Monoclonal |
| Clone | 14F9 |
| Isotype | IgG2c |
| Target Name | CRB3 |
| Species | Human |
| Immunogen | Full length of Human CRB3 protein. |
| Conjugation | Un-conjugated |
| Alternate Names | Protein crumbs homolog 3 |

Application Instructions

| Application table | Application | Dilution |
|-------------------|-------------|----------|
| | ICC/IF | 1:100 |
| | IHC | 1:100 |
| | WB | 1:1000 |

Application Note * The dilutions indicate recommended starting dilutions and the optimal dilutions or concentrations should be determined by the scientist.

Properties

| | |
|---------------------|---|
| Form | Liquid |
| Purification | Purified. |
| Concentration | 1 mg/ml |
| Storage instruction | For continuous use, store undiluted antibody at 2-8°C for up to a week. For long-term storage, aliquot and store at -20°C. Storage in frost free freezers is not recommended. Avoid repeated freeze/thaw cycles. Suggest spin the vial prior to opening. The antibody solution should be gently mixed before use. |
| Note | For laboratory research only, not for drug, diagnostic or other use. |

Bioinformation

Database links [GeneID: 224912 Mouse](#)
[GeneID: 92359 Human](#)
[Swiss-port # Q8QZT4 Mouse](#)
[Swiss-port # Q9BUF7 Human](#)

Gene Symbol CRB3

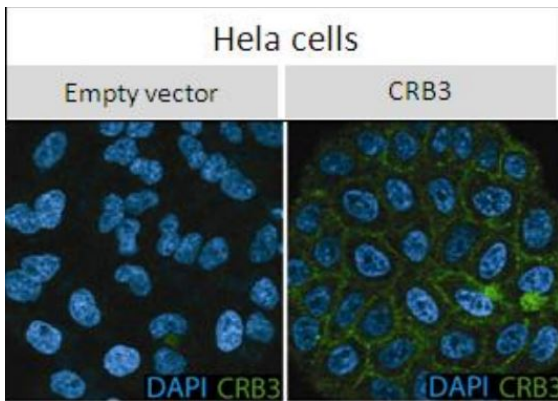
Gene Full Name crumbs family member 3

Background This gene encodes a member of the Crumbs family of proteins. This protein may play a role in epithelial cell polarity and is associated with tight junctions at the apical surface of epithelial cells. Alternate transcriptional splice variants, encoding different isoforms, have been characterized. [provided by RefSeq, Jul 2008]

Function Involved in the establishment of cell polarity in mammalian epithelial cells. Regulates the morphogenesis of tight junctions. [UniProt]

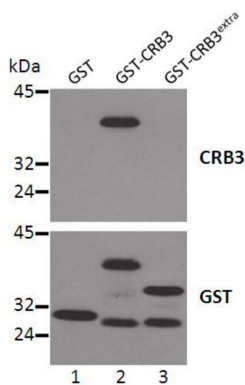
Calculated Mw 13 kDa

Images



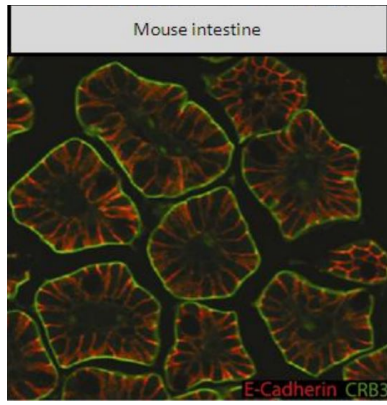
ARG56564 anti-CRB3 antibody [14F9] ICC/IF image

Immunofluorescence: Overexpressed human CRB3 in lysates of HeLa cells stained with ARG56564 anti-CRB3 antibody [14F9].



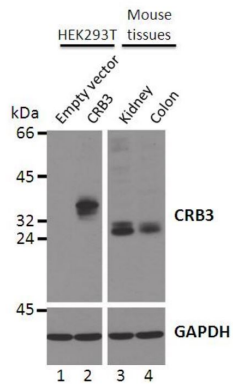
ARG56564 anti-CRB3 antibody [14F9] WB image

Western blot: analysis of full length CRB3 (GST-CRB3) but not the extracellular domain of CRB3 (GST-CRB3^{extra}). ARG56564 anti-CRB3 antibody [14F9] was used at 1:1000 dilution.



ARG56564 anti-CRB3 antibody [14F9] ICC/IF image

Immunofluorescence: Endogenous human CRB3 expression in the mouse intestine stained with ARG56564 anti-CRB3 antibody [14F9]. DAPI was used to stain the nuclei in HeLa cells, whereas E-cadherin staining was used to highlight the lateral membrane in mouse intestine.



ARG56564 anti-CRB3 antibody [14F9] WB image

Western blot: analysis of overexpressed (HEK293T cells) and endogenous CRB3 (mouse tissues). The blots were stained with ARG56564 anti-CRB3 antibody [14F9].