

ARG56533 anti-Epoxide Hydrolase antibody

Package: 50 µg
Store at: -20°C

Summary

Product Description	Rabbit Polyclonal antibody recognizes Epoxide Hydrolase
Tested Reactivity	Hu, Ms, Rat
Predict Reactivity	Bov, Chk, Dog, Pig
Tested Application	WB
Host	Rabbit
Clonality	Polyclonal
Isotype	IgG
Target Name	Epoxide Hydrolase
Species	Human
Immunogen	Synthetic peptide around aa. 292-306 of Human Epoxide Hydrolase. (DMKGYGESSAPPEIE)
Conjugation	Un-conjugated
Alternate Names	EPHX; Epoxide hydratase; Epoxide hydrolase 1; EPOX; EC 3.3.2.9; MEH; Microsomal epoxide hydrolase; HYL1

Application Instructions

Application table	Application	Dilution
	WB	Assay-dependent
Application Note	* The dilutions indicate recommended starting dilutions and the optimal dilutions or concentrations should be determined by the scientist.	

Properties

Form	Liquid
Purification	Affinity purification with immunogen.
Storage instruction	For continuous use, store undiluted antibody at 2-8°C for up to a week. For long-term storage, aliquot and store at -20°C. Storage in frost free freezers is not recommended. Avoid repeated freeze/thaw cycles. Suggest spin the vial prior to opening. The antibody solution should be gently mixed before use.
Note	For laboratory research only, not for drug, diagnostic or other use.

Bioinformation

Gene Symbol	EPHX1
Gene Full Name	epoxide hydrolase 1, microsomal (xenobiotic)
Background	Epoxide hydrolase is a critical biotransformation enzyme that converts epoxides from the degradation of aromatic compounds to trans-dihydrodiols which can be conjugated and excreted from the body. Epoxide hydrolase functions in both the activation and detoxification of epoxides. Mutations in this gene cause

preeclampsia, epoxide hydrolase deficiency or increased epoxide hydrolase activity. Alternatively spliced transcript variants encoding the same protein have been found for this gene.[provided by RefSeq, Dec 2008]

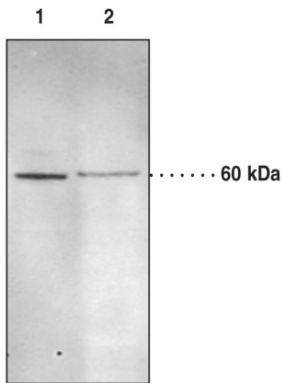
Function

Biotransformation enzyme that catalyzes the hydrolysis of arene and aliphatic epoxides to less reactive and more water soluble dihydrodiols by the trans addition of water. [UniProt]

Calculated Mw

53 kDa

Images



ARG56533 anti-Epoxyde Hydrolase antibody WB image

Western blot: 1) 30 µg of Human liver 10,000 x g supernatant, and 2) 60 µg of Mouse liver 10,000 x g supernatant stained with ARG56533 anti-Epoxyde Hydrolase antibody.