

ARG56508 anti-CARD15 / NOD2 antibody

Package: 250 µl
Store at: -20°C

Summary

Product Description	Rabbit Polyclonal antibody recognizes CARD15 / NOD2
Tested Reactivity	Hu
Tested Application	WB
Host	Rabbit
Clonality	Polyclonal
Isotype	IgG
Target Name	CARD15 / NOD2
Species	Human
Immunogen	Synthetic peptide around aa. 28-301 of Human recombinant CARD15 / NOD2.
Conjugation	Un-conjugated
Alternate Names	Inflammatory bowel disease protein 1; PSORAS1; BLAU; CARD15; CD; CLR16.3; NLRC2; Caspase recruitment domain-containing protein 15; IBD1; ACUG; Nucleotide-binding oligomerization domain-containing protein 2; NOD2B

Application Instructions

Application table	Application	Dilution
	WB	1:200
Application Note	* The dilutions indicate recommended starting dilutions and the optimal dilutions or concentrations should be determined by the scientist.	

Properties

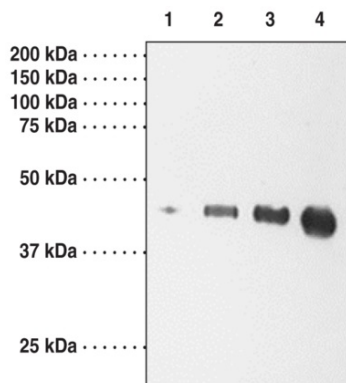
Form	Liquid
Purification	Purification with Protein A.
Storage instruction	For continuous use, store undiluted antibody at 2-8°C for up to a week. For long-term storage, aliquot and store at -20°C. Storage in frost free freezers is not recommended. Avoid repeated freeze/thaw cycles. Suggest spin the vial prior to opening. The antibody solution should be gently mixed before use.
Note	For laboratory research only, not for drug, diagnostic or other use.

Bioinformation

Database links	GeneID: 64127 Human Swiss-port # Q9HC29 Human
Gene Symbol	NOD2

Gene Full Name	nucleotide-binding oligomerization domain containing 2
Background	This gene is a member of the Nod1/Apaf-1 family and encodes a protein with two caspase recruitment (CARD) domains and six leucine-rich repeats (LRRs). The protein is primarily expressed in the peripheral blood leukocytes. It plays a role in the immune response to intracellular bacterial lipopolysaccharides (LPS) by recognizing the muramyl dipeptide (MDP) derived from them and activating the NFKB protein. Mutations in this gene have been associated with Crohn disease and Blau syndrome. Alternatively spliced transcript variants encoding distinct isoforms have been found for this gene. [provided by RefSeq, Jun 2014]
Function	Recognizes muramyl dipeptide (MDP) constituents of bacterial peptidoglycans and plays a key role in gastrointestinal immunity: upon stimulation, binds the proximal adapter receptor-interacting RIPK2, which recruits ubiquitin ligases as XIAP, BIRC2, BIRC3 and the LUBAC complex, triggering activation of MAP kinases and activation of NF-kappa-B signaling, leading to activate the transcription of hundreds of genes involved in immune response. [UniProt]
Calculated Mw	115 kDa
PTM	Polyubiquitinated following MDP stimulation, leading to proteasome-mediated degradation (PubMed:23019338).

Images



ARG56508 anti-CARD15 / NOD2 antibody WB image

Western blot: 1) 0.01 µg of Nod2 Recombinant Fragment, 2) 0.02 µg of Nod2 Recombinant Fragment, 3) 0.03 µg of Nod2 Recombinant Fragment, and 4) 0.05 µg of Nod2 Recombinant Fragment stained with ARG56508 anti-CARD15 / NOD2 antibody.