

ARG56495 anti-Prostaglandin E synthase 2 antibody

Package: 50 µg
Store at: -20°C

Summary

| | |
|---------------------|---|
| Product Description | Rabbit Polyclonal antibody recognizes Prostaglandin E synthase 2 |
| Tested Reactivity | Hu, Ms, Rat, AGMK, Bov, Sheep |
| Predict Reactivity | Macaq |
| Tested Application | IHC-P, WB |
| Specificity | This antibody does not react to mPGE synthase-1 and Cytosolic PGE synthase. |
| Host | Rabbit |
| Clonality | Polyclonal |
| Isotype | IgG |
| Target Name | Prostaglandin E synthase 2 |
| Species | Human |
| Immunogen | KLH-conjugated synthetic peptide around aa. 221-235 of Human Prostaglandin E synthase 2. (VYGGKEARTEEMKWR) |
| Conjugation | Un-conjugated |
| Alternate Names | C9orf15; mPGE synthase-2; EC 5.3.99.3; Prostaglandin-H; Membrane-associated prostaglandin E synthase-2; GBF1; PGES2; 2; Prostaglandin E synthase 2; GBF-1; mPGES-2; Microsomal prostaglandin E synthase 2 |

Application Instructions

| Application table | Application | Dilution |
|-------------------|--|-----------------|
| | IHC-P | Assay-dependent |
| | WB | Assay-dependent |
| Application Note | * The dilutions indicate recommended starting dilutions and the optimal dilutions or concentrations should be determined by the scientist. | |

Properties

| | |
|---------------------|---|
| Form | Liquid |
| Purification | Affinity purification with immunogen. |
| Storage instruction | For continuous use, store undiluted antibody at 2-8°C for up to a week. For long-term storage, aliquot and store at -20°C. Storage in frost free freezers is not recommended. Avoid repeated freeze/thaw cycles. Suggest spin the vial prior to opening. The antibody solution should be gently mixed before use. |
| Note | For laboratory research only, not for drug, diagnostic or other use. |

Bioinformation

Database links [GeneID: 80142 Human](#)
[GeneID: 96979 Mouse](#)
[Swiss-port # Q8BWM0 Mouse](#)
[Swiss-port # Q9H7Z7 Human](#)

Gene Symbol PTGES2

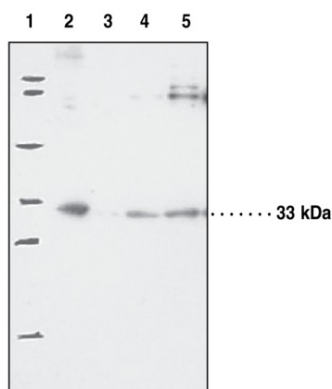
Gene Full Name prostaglandin E synthase 2

Background The protein encoded by this gene is a membrane-associated prostaglandin E synthase, which catalyzes the conversion of prostaglandin H2 to prostaglandin E2. This protein also has been shown to activate the transcription regulated by a gamma-interferon-activated transcription element (GATE). Multiple transcript variants have been found for this gene. [provided by RefSeq, Jun 2009]

Function Isomerase that catalyzes the conversion of PGH2 into the more stable prostaglandin E2 (PGE2). [UniProt]

Calculated Mw 42 kDa

Images



ARG56495 anti-Prostaglandin E synthase 2 antibody WB image

Western blot: 1) Precision Plus Protein Standard, 2) 30 µg of Mouse heart homogenate, 3) 30 µg of Bovine aorta homogenate, 4) 30 µg of Ram seminal vesicle microsome, and 5) 10 µg of COS-7 cell lysate stained with ARG56495 anti-Prostaglandin E synthase 2 antibody.