

ARG56480 anti-DP1 Receptor antibody

Package: 250 µl
Store at: -20°C

Summary

Product Description	Rabbit Polyclonal antibody recognizes DP1 Receptor
Tested Reactivity	Hu, Ms, Rat
Tested Application	ICC/IF, WB
Host	Rabbit
Clonality	Polyclonal
Isotype	IgG
Target Name	DP1 Receptor
Species	Mouse
Immunogen	Synthetic peptide around the N-terminus of Mouse DP1 Receptor.
Conjugation	Un-conjugated
Alternate Names	PTGDR1; AS1; DP1; ASRT1; PGD receptor; Prostanoid DP receptor; Prostaglandin D2 receptor; DP; PGD2 receptor

Application Instructions

Application table	Application	Dilution
	ICC/IF	1:200
	WB	1:200
Application Note	* The dilutions indicate recommended starting dilutions and the optimal dilutions or concentrations should be determined by the scientist.	

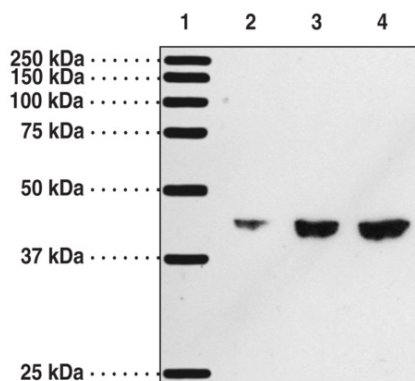
Properties

Form	Liquid
Purification	Affinity purification with immunogen.
Buffer	TBS (pH 7.4), 0.02% Sodium azide, 50% Glycerol and 0.1% BSA.
Preservative	0.02% Sodium azide
Stabilizer	50% Glycerol and 0.1% BSA
Storage instruction	For continuous use, store undiluted antibody at 2-8°C for up to a week. For long-term storage, aliquot and store at -20°C. Storage in frost free freezers is not recommended. Avoid repeated freeze/thaw cycles. Suggest spin the vial prior to opening. The antibody solution should be gently mixed before use.
Note	For laboratory research only, not for drug, diagnostic or other use.

Bioinformation

Gene Symbol	Ptgdr
Gene Full Name	prostaglandin D receptor
Background	This gene encodes a member of the guanine nucleotide-binding protein (G protein)-coupled receptor (GPCR) superfamily. The receptors are seven-pass transmembrane proteins that respond to extracellular cues and activate intracellular signal transduction pathways. This protein is reported to be a receptor for prostaglandin D2, which is a mediator of allergic inflammation and allergic airway inflammation in asthma. Alternative splicing results in multiple transcript variants. [provided by RefSeq, Jul 2013]
Function	Receptor for prostaglandin D2 (PGD2). The activity of this receptor is mainly mediated by G(s) proteins that stimulate adenylate cyclase, resulting in an elevation of intracellular cAMP. A mobilization of calcium is also observed, but without formation of inositol 1,4,5-trisphosphate (By similarity). [UniProt]
Calculated Mw	40 kDa

Images



ARG56480 anti-DP1 Receptor antibody WB image

Western blot: 1) Precision Plus Protein Standard, 2) 10 µg of HT-29 cell lysate, 3) 20 µg of HT-29 cell lysate, and 4) 40 µg of HT-29 cell lysate stained with ARG56480 anti-DP1 Receptor antibody.