

**ARG56396**  
anti-NDUFA2 antibodyPackage: 100 µl  
Store at: -20°C

### Summary

Product Description	Rabbit Polyclonal antibody recognizes NDUFA2
Tested Reactivity	Hu, Ms, Rat
Tested Application	ICC/IF, WB
Host	Rabbit
Clonality	Polyclonal
Isotype	IgG
Target Name	NDUFA2
Species	Human
Immunogen	Recombinant protein of Human NDUFA2
Conjugation	Un-conjugated
Alternate Names	CI-B8; Complex I-B8; CD14; NADH-ubiquinone oxidoreductase B8 subunit; CIB8; B8; NADH dehydrogenase [ubiquinone] 1 alpha subcomplex subunit 2

### Application Instructions

Application table	Application	Dilution
	ICC/IF	1:50 - 1:200
	WB	1:500 - 1:2000
Application Note	* The dilutions indicate recommended starting dilutions and the optimal dilutions or concentrations should be determined by the scientist.	
Positive Control	Mouse kidney	

### Properties

Form	Liquid
Purification	Affinity purification with immunogen.
Buffer	PBS (pH 7.3), 0.02% Sodium azide and 50% Glycerol.
Preservative	0.02% sodium azide
Stabilizer	50% Glycerol
Storage instruction	For continuous use, store undiluted antibody at 2-8°C for up to a week. For long-term storage, aliquot and store at -20°C. Storage in frost free freezers is not recommended. Avoid repeated freeze/thaw cycles. Suggest spin the vial prior to opening. The antibody solution should be gently mixed before use.
Note	For laboratory research only, not for drug, diagnostic or other use.

## Bioinformation

---

### Database links

[GeneID: 17991 Mouse](#)

[GeneID: 4695 Human](#)

[Swiss-port # O43678 Human](#)

[Swiss-port # Q9CQ75 Mouse](#)

### Gene Symbol

NDUFA2

### Gene Full Name

NADH dehydrogenase (ubiquinone) 1 alpha subcomplex, 2, 8kDa

### Background

The encoded protein is a subunit of the hydrophobic protein fraction of the NADH:ubiquinone oxidoreductase (complex 1), the first enzyme complex in the electron transport chain located in the inner mitochondrial membrane, and may be involved in regulating complex I activity or its assembly via assistance in redox processes. Mutations in this gene are associated with Leigh syndrome, an early-onset progressive neurodegenerative disorder. Alternative splicing results in multiple transcript variants.[provided by RefSeq, May 2010]

### Function

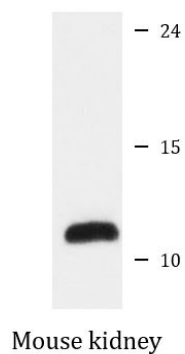
Accessory subunit of the mitochondrial membrane respiratory chain NADH dehydrogenase (Complex I), that is believed not to be involved in catalysis. Complex I functions in the transfer of electrons from NADH to the respiratory chain. The immediate electron acceptor for the enzyme is believed to be ubiquinone. [UniProt]

### Calculated Mw

11 kDa

## Images

---



ARG56396 anti-NDUFA2 antibody WB image

Western blot: Mouse kidney lysate stained with ARG56396 anti-NDUFA2 antibody.