

## ARG56354 anti-BRCC2 antibody

Package: 100 µl  
Store at: -20°C

### Summary

Product Description	Rabbit Polyclonal antibody recognizes BRCC2
Tested Reactivity	Hu, Ms, Rat
Tested Application	ICC/IF, WB
Host	Rabbit
Clonality	Polyclonal
Isotype	IgG
Target Name	BRCC2
Species	Human
Immunogen	Recombinant protein of Human BRCC2
Conjugation	Un-conjugated
Alternate Names	BH3-like motif-containing cell death inducer; Breast cancer cell protein 2; BRCC2

### Application Instructions

Application table	Application	Dilution
	ICC/IF	1:50 - 1:100
	WB	1:500 - 1:2000
Application Note	* The dilutions indicate recommended starting dilutions and the optimal dilutions or concentrations should be determined by the scientist.	
Positive Control	MCF7	

### Properties

Form	Liquid
Purification	Affinity purification with immunogen.
Buffer	PBS (pH 7.3), 0.02% Sodium azide and 50% Glycerol.
Preservative	0.02% Sodium azide
Stabilizer	50% Glycerol
Storage instruction	For continuous use, store undiluted antibody at 2-8°C for up to a week. For long-term storage, aliquot and store at -20°C. Storage in frost free freezers is not recommended. Avoid repeated freeze/thaw cycles. Suggest spin the vial prior to opening. The antibody solution should be gently mixed before use.
Note	For laboratory research only, not for drug, diagnostic or other use.

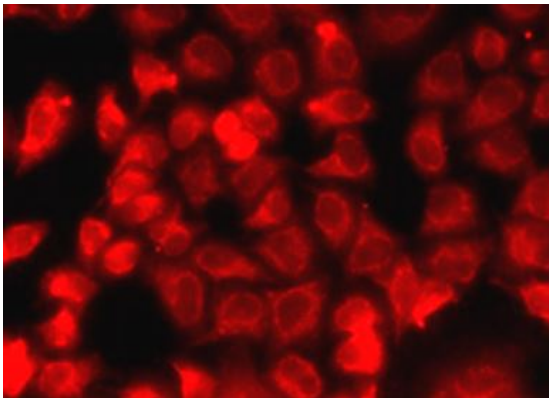
## Bioinformation

---

Database links	<a href="#">GeneID: 414899 Human</a> <a href="#">Swiss-port # Q8IZY5 Human</a>
Gene Symbol	BLID
Gene Full Name	BH3-like motif containing, cell death inducer
Background	This gene encodes a BH3-like motif containing protein involved in cell death. The encoded protein may induce apoptosis in a caspase-dependent manner. The protein is localized in both the cytoplasm and the mitochondrion. [provided by RefSeq, Aug 2011]
Function	Functions as a proapoptotic molecule through the caspase-dependent mitochondrial pathway of cell death. [UniProt]
Calculated Mw	12 kDa

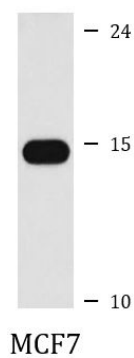
## Images

---



ARG56354 anti-BRCC2 antibody ICC/IF image

Immunofluorescence: MCF7 cells stained with ARG56354 anti-BRCC2 antibody.



ARG56354 anti-BRCC2 antibody WB image

Western blot: MCF7 cell lysate stained with ARG56354 anti-BRCC2 antibody.