

ARG56346 anti-delta Sarcoglycan antibody

Package: 100 µl
Store at: -20°C

Summary

Product Description	Rabbit Polyclonal antibody recognizes delta Sarcoglycan
Tested Reactivity	Hu, Ms, Rat
Tested Application	IHC-P, WB
Host	Rabbit
Clonality	Polyclonal
Isotype	IgG
Target Name	delta Sarcoglycan
Species	Human
Immunogen	Recombinant protein of Human delta Sarcoglycan
Conjugation	Un-conjugated
Alternate Names	DAGD; 35DAG; SG-delta; Delta-sarcoglycan; Delta-SG; CMD1L; 35 kDa dystrophin-associated glycoprotein; SGCDP; SGD

Application Instructions

Application table	Application	Dilution
	IHC-P	1:50 - 1:200
	WB	1:500 - 1:2000
Application Note	* The dilutions indicate recommended starting dilutions and the optimal dilutions or concentrations should be determined by the scientist.	
Positive Control	Jurkat	

Properties

Form	Liquid
Purification	Affinity purification with immunogen.
Buffer	PBS (pH 7.3), 0.02% Sodium azide and 50% Glycerol.
Preservative	0.02% Sodium azide
Stabilizer	50% Glycerol
Storage instruction	For continuous use, store undiluted antibody at 2-8°C for up to a week. For long-term storage, aliquot and store at -20°C. Storage in frost free freezers is not recommended. Avoid repeated freeze/thaw cycles. Suggest spin the vial prior to opening. The antibody solution should be gently mixed before use.
Note	For laboratory research only, not for drug, diagnostic or other use.

Bioinformation

Database links [GeneID: 24052 Mouse](#)
[GeneID: 6444 Human](#)
[Swiss-port # P82347 Mouse](#)
[Swiss-port # Q92629 Human](#)

Gene Symbol SGCD

Gene Full Name sarcoglycan, delta (35kDa dystrophin-associated glycoprotein)

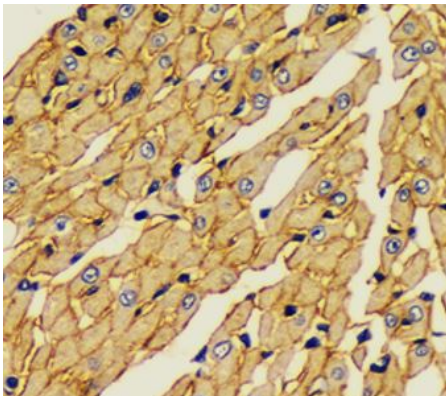
Background The protein encoded by this gene is one of the four known components of the sarcoglycan complex, which is a subcomplex of the dystrophin-glycoprotein complex (DGC). DGC forms a link between the F-actin cytoskeleton and the extracellular matrix. This protein is expressed most abundantly in skeletal and cardiac muscle. Mutations in this gene have been associated with autosomal recessive limb-girdle muscular dystrophy and dilated cardiomyopathy. Alternatively spliced transcript variants encoding distinct isoforms have been observed for this gene. [provided by RefSeq, Jul 2008]

Function Component of the sarcoglycan complex, a subcomplex of the dystrophin-glycoprotein complex which forms a link between the F-actin cytoskeleton and the extracellular matrix. [UniProt]

Calculated Mw 32 kDa

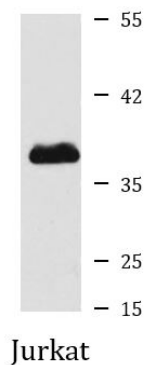
PTM Glycosylated.
Disulfide bonds are present.

Images



ARG56346 anti-delta Sarcoglycan antibody IHC-P image

Immunohistochemistry: Paraffin-embedded Rat heart stained with ARG56346 anti-delta Sarcoglycan antibody at 1:100 dilution.



ARG56346 anti-delta Sarcoglycan antibody WB image

Western blot: Jurkat cell lysate stained with ARG56346 anti-delta Sarcoglycan antibody.