

ARG56335 anti-RPS7 antibody

Package: 100 µl
Store at: -20°C

Summary

Product Description	Rabbit Polyclonal antibody recognizes RPS7
Tested Reactivity	Hu, Ms, Rat
Tested Application	ICC/IF, IHC-P, WB
Host	Rabbit
Clonality	Polyclonal
Isotype	IgG
Target Name	RPS7
Species	Human
Immunogen	Recombinant protein of Human RPS7
Conjugation	Un-conjugated
Alternate Names	40S ribosomal protein S7; S7; DBA8

Application Instructions

Application table	Application	Dilution
	ICC/IF	1:50 - 1:200
	IHC-P	1:50 - 1:200
	WB	1:500 - 1:2000
Application Note	* The dilutions indicate recommended starting dilutions and the optimal dilutions or concentrations should be determined by the scientist.	
Positive Control	HeLa	

Properties

Form	Liquid
Purification	Affinity purification with immunogen.
Buffer	PBS (pH 7.3), 0.02% Sodium azide and 50% Glycerol.
Preservative	0.02% Sodium azide
Stabilizer	50% Glycerol
Storage instruction	For continuous use, store undiluted antibody at 2-8°C for up to a week. For long-term storage, aliquot and store at -20°C. Storage in frost free freezers is not recommended. Avoid repeated freeze/thaw cycles. Suggest spin the vial prior to opening. The antibody solution should be gently mixed before use.
Note	For laboratory research only, not for drug, diagnostic or other use.

Bioinformation

Database links

[GeneID: 20115 Mouse](#)

[GeneID: 6201 Human](#)

[Swiss-port # P62081 Human](#)

[Swiss-port # P62082 Mouse](#)

Gene Symbol

RPS7

Gene Full Name

ribosomal protein S7

Background

Ribosomes, the organelles that catalyze protein synthesis, consist of a small 40S subunit and a large 60S subunit. Together these subunits are composed of 4 RNA species and approximately 80 structurally distinct proteins. This gene encodes a ribosomal protein that is a component of the 40S subunit. The protein belongs to the S7E family of ribosomal proteins. It is located in the cytoplasm. As is typical for genes encoding ribosomal proteins, there are multiple processed pseudogenes of this gene dispersed through the genome. [provided by RefSeq, Jul 2008]

Function

Required for rRNA maturation. [UniProt]

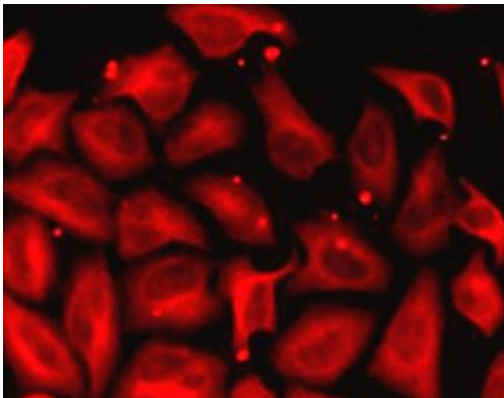
Calculated Mw

22 kDa

PTM

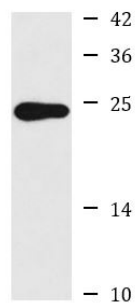
Phosphorylated by NEK6.

Images



ARG56335 anti-RPS7 antibody ICC/IF image

Immunofluorescence: MCF7 cells stained with ARG56335 anti-RPS7 antibody.



HeLa

ARG56335 anti-RPS7 antibody WB image

Western blot: HeLa cell lysate stained with ARG56335 anti-RPS7 antibody.