

ARG56286 anti-UQCRC2 antibody

Package: 100 µl
Store at: -20°C

Summary

| | |
|---------------------|---|
| Product Description | Rabbit Polyclonal antibody recognizes UQCRC2 |
| Tested Reactivity | Hu, Ms, Rat |
| Tested Application | IHC-P, IP, WB |
| Host | Rabbit |
| Clonality | Polyclonal |
| Isotype | IgG |
| Target Name | UQCRC2 |
| Species | Human |
| Immunogen | Recombinant protein of Human UQCRC2 |
| Conjugation | Un-conjugated |
| Alternate Names | Complex III subunit 2; Core protein II; UQCRC2; QCR2; Ubiquinol-cytochrome-c reductase complex core protein 2; Cytochrome b-c1 complex subunit 2, mitochondrial; MC3DN5 |

Application Instructions

| Application table | Application | Dilution |
|-------------------|--|----------------|
| | IHC-P | 1:50 - 1:100 |
| | IP | 1:50 - 1:200 |
| | WB | 1:500 - 1:2000 |
| Application Note | * The dilutions indicate recommended starting dilutions and the optimal dilutions or concentrations should be determined by the scientist. | |
| Positive Control | Mouse spinal cord | |
| Observed Size | ~ 45 kDa | |

Properties

| | |
|---------------------|---|
| Form | Liquid |
| Purification | Affinity purification with immunogen. |
| Buffer | PBS (pH 7.3), 0.02% Sodium azide and 50% Glycerol. |
| Preservative | 0.02% Sodium azide |
| Stabilizer | 50% Glycerol |
| Storage instruction | For continuous use, store undiluted antibody at 2-8°C for up to a week. For long-term storage, aliquot and store at -20°C. Storage in frost free freezers is not recommended. Avoid repeated freeze/thaw cycles. Suggest spin the vial prior to opening. The antibody solution should be gently mixed before use. |

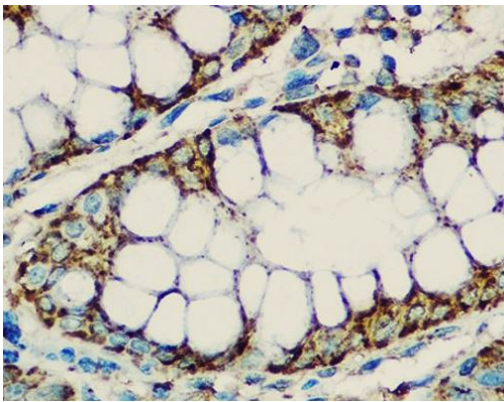
Note

For laboratory research only, not for drug, diagnostic or other use.

Bioinformation

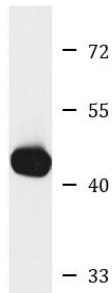
| | |
|----------------|---|
| Gene Symbol | UQCRC2 |
| Gene Full Name | ubiquinol-cytochrome c reductase core protein II |
| Background | The protein encoded by this gene is located in the mitochondrion, where it is part of the ubiquinol-cytochrome c reductase complex (also known as complex III). This complex constitutes a part of the mitochondrial respiratory chain. Defects in this gene are a cause of mitochondrial complex III deficiency nuclear type 5. [provided by RefSeq, Jul 2015] |
| Function | This is a component of the ubiquinol-cytochrome c reductase complex (complex III or cytochrome b-c1 complex), which is part of the mitochondrial respiratory chain. The core protein 2 is required for the assembly of the complex. [UniProt] |
| Calculated Mw | 48 kDa |

Images



ARG56286 anti-UQCRC2 antibody IHC-P image

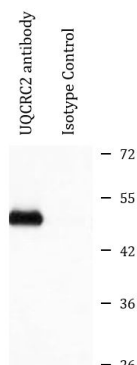
Immunohistochemistry: Paraffin-embedded Human colon tissue stained with ARG56286 anti-UQCRC2 antibody at 1:100 dilution.



Mouse spinal cord

ARG56286 anti-UQCRC2 antibody WB image

Western blot: Mouse spinal cord lysate stained with ARG56286 anti-UQCRC2 antibody.



ARG56286 anti-UQCRC2 antibody IP image

Immunoprecipitation: 200 µg extracts of HepG2 cells were immunoprecipitated and stained with ARG56286 anti-UQCRC2 antibody at 1:1000 dilution.