

**ARG56242**  
anti-CAPG antibodyPackage: 50 µl  
Store at: -20°C

### Summary

Product Description	Rabbit Polyclonal antibody recognizes CAPG
Tested Reactivity	Hu, Ms, Rat
Tested Application	IHC-P, WB
Host	Rabbit
Clonality	Polyclonal
Isotype	IgG
Target Name	CAPG
Species	Human
Immunogen	Recombinant protein of Human CAPG
Conjugation	Un-conjugated
Alternate Names	AFCP; Macrophage-capping protein; HEL-S-66; Actin regulatory protein CAP-G; MCP

### Application Instructions

Application table	Application	Dilution
	IHC-P	1:50 - 1:200
	WB	1:500 - 1:2000
Application Note	* The dilutions indicate recommended starting dilutions and the optimal dilutions or concentrations should be determined by the scientist.	
Positive Control	Mouse lung and HL60	

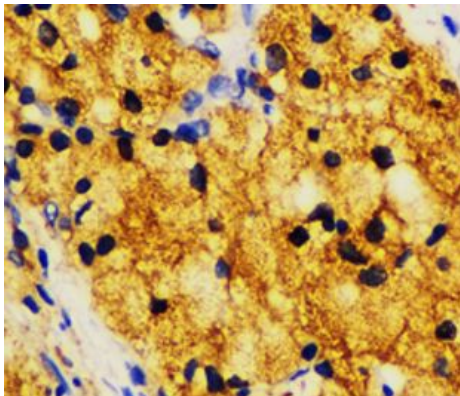
### Properties

Form	Liquid
Purification	Affinity purification with immunogen.
Buffer	PBS (pH 7.3), 0.02% Sodium azide and 50% Glycerol.
Preservative	0.02% Sodium azide
Stabilizer	50% Glycerol
Storage instruction	For continuous use, store undiluted antibody at 2-8°C for up to a week. For long-term storage, aliquot and store at -20°C. Storage in frost free freezers is not recommended. Avoid repeated freeze/thaw cycles. Suggest spin the vial prior to opening. The antibody solution should be gently mixed before use.
Note	For laboratory research only, not for drug, diagnostic or other use.

## Bioinformation

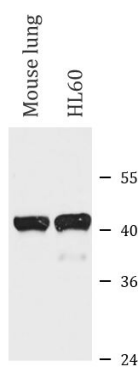
Database links	<a href="#">GeneID: 297339 Rat</a> <a href="#">GeneID: 822 Human</a> <a href="#">Swiss-port # P40121 Human</a> <a href="#">Swiss-port # Q6AYC4 Rat</a>
Gene Symbol	CAPG
Gene Full Name	capping protein (actin filament), gelsolin-like
Background	This gene encodes a member of the gelsolin/villin family of actin-regulatory proteins. The encoded protein reversibly blocks the barbed ends of F-actin filaments in a Ca <sup>2+</sup> and phosphoinositide-regulated manner, but does not sever preformed actin filaments. By capping the barbed ends of actin filaments, the encoded protein contributes to the control of actin-based motility in non-muscle cells. Alternatively spliced transcript variants have been observed for this gene. [provided by RefSeq, Jan 2012]
Function	Calcium-sensitive protein which reversibly blocks the barbed ends of actin filaments but does not sever preformed actin filaments. May play an important role in macrophage function. May play a role in regulating cytoplasmic and/or nuclear structures through potential interactions with actin. May bind DNA. [UniProt]
Calculated Mw	38 kDa
PTM	The N-terminus is blocked.

## Images



ARG56242 anti-CAPG antibody IHC-P image

Immunohistochemistry: Paraffin-embedded Human lung cancer stained with ARG56242 anti-CAPG antibody at 1:100 dilution.



ARG56242 anti-CAPG antibody WB image

Western blot: Mouse lung and HL60 cell lysates stained with ARG56242 anti-CAPG antibody.