

ARG56064 anti-MYH11 / SMMHC antibody [SMMS-1]

Package: 50 µg
Store at: -20°C

Summary

Product Description	Mouse Monoclonal antibody [SMMS-1] recognizes MYH11 / SMMHC
Tested Reactivity	Hu, Rb
Tested Application	FACS, ICC/IF, IHC-P
Host	Mouse
Clonality	Monoclonal
Clone	SMMS-1
Isotype	IgG1, kappa
Target Name	MYH11 / SMMHC
Species	Human
Immunogen	Human uterus extract.
Conjugation	Un-conjugated
Alternate Names	Myosin-11; Myosin heavy chain, smooth muscle isoform; AAT4; SMMHC; FAA4; SMHC; Myosin heavy chain 11

Application Instructions

Cross Reactivity Note	Reference: doi:10.1016/j.apmt.2021.101198 stained rabbit samples by ARG56064 anti-MYH11 / SMMHC antibody [SMMS-1].								
Application table	<table><thead><tr><th>Application</th><th>Dilution</th></tr></thead><tbody><tr><td>FACS</td><td>1 - 2 µg/10⁶ cells</td></tr><tr><td>ICC/IF</td><td>1 - 2 µg/ml</td></tr><tr><td>IHC-P</td><td>1 - 2 µg/ml</td></tr></tbody></table>	Application	Dilution	FACS	1 - 2 µg/10 ⁶ cells	ICC/IF	1 - 2 µg/ml	IHC-P	1 - 2 µg/ml
Application	Dilution								
FACS	1 - 2 µg/10 ⁶ cells								
ICC/IF	1 - 2 µg/ml								
IHC-P	1 - 2 µg/ml								
Application Note	IHC-P: Antigen Retrieval: Boil tissue section in 10 mM Citrate buffer (pH 6.0) for 10-20 min, followed by cooling at RT for 20 min. * The dilutions indicate recommended starting dilutions and the optimal dilutions or concentrations should be determined by the scientist.								

Properties

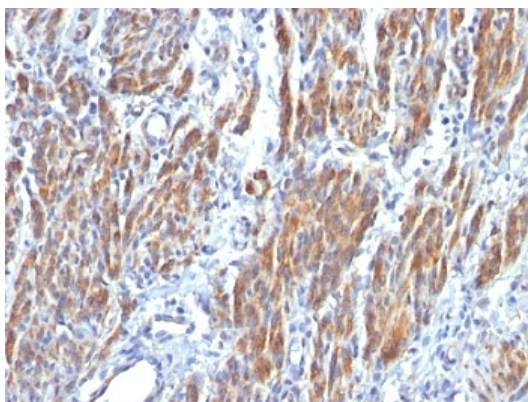
Form	Liquid
Purification	Purification with Protein G.
Buffer	PBS (pH 7.4), 0.05% Sodium azide and 0.1 mg/ml BSA
Preservative	0.05% Sodium azide
Stabilizer	0.1 mg/ml BSA

Concentration	0.2 mg/ml
Storage instruction	For continuous use, store undiluted antibody at 2-8°C for up to a week. For long-term storage, aliquot and store at -20°C or below. Storage in frost free freezers is not recommended. Avoid repeated freeze/thaw cycles. Suggest spin the vial prior to opening. The antibody solution should be gently mixed before use.
Note	For laboratory research only, not for drug, diagnostic or other use.

Bioinformation

Database links	GeneID: 100009145 Rabbit GeneID: 4629 Human Swiss-port # P35748 Rabbit Swiss-port # P35749 Human
Gene Symbol	MYH11
Gene Full Name	myosin, heavy chain 11, smooth muscle
Background	The protein encoded by this gene is a smooth muscle myosin belonging to the myosin heavy chain family. The gene product is a subunit of a hexameric protein that consists of two heavy chain subunits and two pairs of non-identical light chain subunits. It functions as a major contractile protein, converting chemical energy into mechanical energy through the hydrolysis of ATP. The gene encoding a human ortholog of rat NUDE1 is transcribed from the reverse strand of this gene, and its 3' end overlaps with that of the latter. The pericentric inversion of chromosome 16 [inv(16)(p13q22)] produces a chimeric transcript that encodes a protein consisting of the first 165 residues from the N terminus of core-binding factor beta in a fusion with the C-terminal portion of the smooth muscle myosin heavy chain. This chromosomal rearrangement is associated with acute myeloid leukemia of the M4Eo subtype. Alternative splicing generates isoforms that are differentially expressed, with ratios changing during muscle cell maturation. Alternatively spliced transcript variants encoding different isoforms have been identified. [provided by RefSeq, Jul 2008]
Function	Muscle contraction. [UniProt]
Calculated Mw	227 kDa
Cellular Localization	Cytoplasmic

Images



ARG56064 anti-MYH11 / SMMHC antibody [SMMS-1] IHC-P image

Immunohistochemistry: Formalin-fixed, paraffin-embedded Human Leiomyosarcoma stained with ARG56064 anti-MYH11 / SMMHC antibody [SMMS-1].