

ARG55869 anti-Mitofilin antibody

Package: 100 µl
Store at: -20°C

Summary

Product Description	Rabbit Polyclonal antibody recognizes Mitofilin
Tested Reactivity	Hu
Tested Application	WB
Host	Rabbit
Clonality	Polyclonal
Isotype	IgG
Target Name	Mitofilin
Species	Human
Immunogen	KLH-conjugated synthetic peptide corresponding to aa. 170-203 (Center) of Human Mitofilin.
Conjugation	Un-conjugated
Alternate Names	Cell proliferation-inducing gene 4/52 protein; P89; MICOS complex subunit MIC60; PIG52; P87/89; HMP; P87; Mitofilin; Mic60; PIG4; p87/89; MINOS2; Mitochondrial inner membrane protein

Application Instructions

Application table	Application	Dilution
	WB	1:1000
Application Note	* The dilutions indicate recommended starting dilutions and the optimal dilutions or concentrations should be determined by the scientist.	
Positive Control	A431	

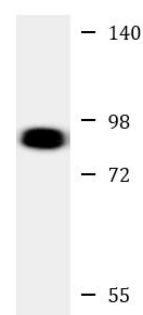
Properties

Form	Liquid
Purification	Purification with Protein A and immunogen peptide.
Buffer	PBS and 0.09% (W/V) Sodium azide
Preservative	0.09% (W/V) Sodium azide
Storage instruction	For continuous use, store undiluted antibody at 2-8°C for up to a week. For long-term storage, aliquot and store at -20°C or below. Storage in frost free freezers is not recommended. Avoid repeated freeze/thaw cycles. Suggest spin the vial prior to opening. The antibody solution should be gently mixed before use.
Note	For laboratory research only, not for drug, diagnostic or other use.

Bioinformation

Database links	GeneID: 10989 Human Swiss-port # Q16891 Human
Gene Symbol	IMMT
Gene Full Name	inner membrane protein, mitochondrial
Function	Component of the MICOS complex, a large protein complex of the mitochondrial inner membrane that plays crucial roles in the maintenance of crista junctions, inner membrane architecture, and formation of contact sites to the outer membrane. Plays an important role in the maintenance of the MICOS complex stability and the mitochondrial cristae morphology. [UniProt]
Calculated Mw	84 kDa
Cellular Localization	Mitochondrion inner membrane; Single-pass membrane protein

Images



A431

ARG55869 anti-Mitofilin antibody WB image

Western blot: 35 µg of A431 cell lysate stained with ARG55869 anti-Mitofilin antibody at 1:1000 dilution.