

ARG55858 anti-CD172b / SIRPB1 antibody

Package: 100 µl
Store at: -20°C

Summary

Product Description	Rabbit Polyclonal antibody recognizes CD172b / SIRPB1
Tested Reactivity	Hu
Tested Application	IHC-P, WB
Host	Rabbit
Clonality	Polyclonal
Isotype	IgG
Target Name	CD172b / SIRPB1
Species	Human
Immunogen	KLH-conjugated synthetic peptide corresponding to aa. 17-43 (N-terminus) of Human CD172b / SIRPB1.
Conjugation	Un-conjugated
Alternate Names	SIRP-beta-1 isoform 3; CD172b; SIRP-BETA-1; Signal-regulatory protein beta-1 isoform 3

Application Instructions

Application table	Application	Dilution
	IHC-P	1:25
	WB	1:1000
Application Note	* The dilutions indicate recommended starting dilutions and the optimal dilutions or concentrations should be determined by the scientist.	
Positive Control	A375	

Properties

Form	Liquid
Purification	Purification with Protein A and immunogen peptide.
Buffer	PBS and 0.09% (W/V) Sodium azide
Preservative	0.09% (W/V) Sodium azide
Storage instruction	For continuous use, store undiluted antibody at 2-8°C for up to a week. For long-term storage, aliquot and store at -20°C or below. Storage in frost free freezers is not recommended. Avoid repeated freeze/thaw cycles. Suggest spin the vial prior to opening. The antibody solution should be gently mixed before use.
Note	For laboratory research only, not for drug, diagnostic or other use.

Bioinformation

Database links [GeneID: 10326 Human](#)
[Swiss-port # O00241 Human](#)

Gene Symbol SIRPB1

Gene Full Name signal-regulatory protein beta 1

Background The protein encoded by this gene is a member of the signal-regulatory-protein (SIRP) family, and also belongs to the immunoglobulin superfamily. SIRP family members are receptor-type transmembrane glycoproteins known to be involved in the negative regulation of receptor tyrosine kinase-coupled signaling processes. This protein was found to interact with TYROBP/DAP12, a protein bearing immunoreceptor tyrosine-based activation motifs. This protein was also reported to participate in the recruitment of tyrosine kinase SYK. Multiple transcript variants encoding different isoforms have been found for this gene. [provided by RefSeq, Feb 2009]

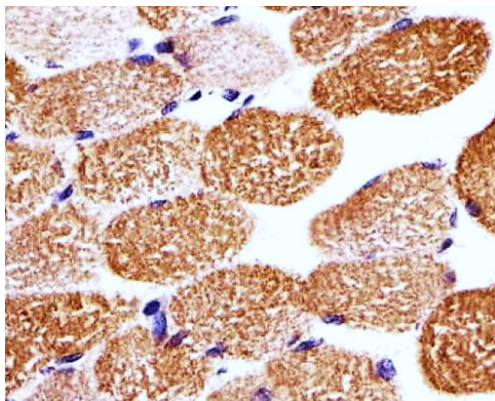
Function Immunoglobulin-like cell surface receptor involved in the negative regulation of receptor tyrosine kinase-coupled signaling processes. Participates also in the recruitment of tyrosine kinase SYK. [UniProt]

Calculated Mw 43 kDa

PTM N-glycosylated.

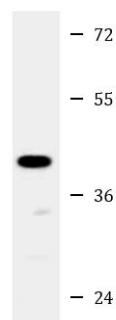
Cellular Localization Membrane; Single-pass type I membrane protein

Images



ARG55858 anti-CD172b / SIRPB1 antibody IHC-P image

Immunohistochemistry: Paraffin-embedded Human skeletal muscle tissue stained with ARG55858 anti-CD172b / SIRPB1 antibody at 1:25 dilution.



A375

ARG55858 anti-CD172b / SIRPB1 antibody WB image

Western blot: 35 µg of A375 cell lysate stained with ARG55858 anti-CD172b / SIRPB1 antibody.