

ARG55853 anti-C1GALT1 antibody

Package: 100 µl
Store at: -20°C

Summary

Product Description	Rabbit Polyclonal antibody recognizes C1GALT1
Tested Reactivity	Hu, Ms
Tested Application	WB
Host	Rabbit
Clonality	Polyclonal
Isotype	IgG
Target Name	C1GALT1
Species	Human
Immunogen	KLH-conjugated synthetic peptide corresponding to aa. 115-144 (Center) of Human C1GALT1.
Conjugation	Un-conjugated
Alternate Names	T-synthase; C1GALT; Core 1 beta3-Gal-T1; C1GalT1; B3Gal-T8; Core 1 beta1,3-galactosyltransferase 1; Beta-1,3-galactosyltransferase; Core 1 O-glycan T-synthase; EC 2.4.1.122; Glycoprotein-N-acetylgalactosamine 3-beta-galactosyltransferase 1; Core 1 UDP-galactose:N-acetylgalactosamine-alpha-R beta 1,3-galactosyltransferase 1

Application Instructions

Application table	Application	Dilution
	WB	1:1000
Application Note	* The dilutions indicate recommended starting dilutions and the optimal dilutions or concentrations should be determined by the scientist.	
Positive Control	Mouse kidney	

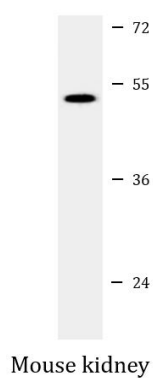
Properties

Form	Liquid
Purification	Purification with Protein A and immunogen peptide.
Buffer	PBS and 0.09% (W/V) Sodium azide
Preservative	0.09% (W/V) Sodium azide
Storage instruction	For continuous use, store undiluted antibody at 2-8°C for up to a week. For long-term storage, aliquot and store at -20°C or below. Storage in frost free freezers is not recommended. Avoid repeated freeze/thaw cycles. Suggest spin the vial prior to opening. The antibody solution should be gently mixed before use.
Note	For laboratory research only, not for drug, diagnostic or other use.

Bioinformation

Database links	GeneID: 56913 Human GeneID: 94192 Mouse Swiss-port # Q9JJ06 Mouse Swiss-port # Q9NS00 Human
Gene Symbol	C1GALT1
Gene Full Name	core 1 synthase, glycoprotein-N-acetylgalactosamine 3-beta-galactosyltransferase 1
Background	The protein encoded by this gene generates the common core 1 O-glycan structure, Gal-beta-1-3GalNAc-R, by the transfer of Gal from UDP-Gal to GalNAc-alpha-1-R. Core 1 is a precursor for many extended mucin-type O-glycans on cell surface and secreted glycoproteins. Studies in mice suggest that this gene plays a key role in thrombopoiesis and kidney homeostasis.[provided by RefSeq, Sep 2010]
Function	Glycosyltransferase that generates the core 1 O-glycan Gal-beta1-3GalNAc-alpha1-Ser/Thr (T antigen), which is a precursor for many extended O-glycans in glycoproteins. Plays a central role in many processes, such as angiogenesis, thrombopoiesis and kidney homeostasis development. [UniProt]
Calculated Mw	42 kDa
Cellular Localization	Membrane; Single-pass type II membrane protein

Images



ARG55853 anti-C1GALT1 antibody WB image

Western blot: 35 µg of Mouse kidney lysate stained with ARG55853 anti-C1GALT1 antibody.