

ARG55766 anti-ESD antibody

Package: 100 µl
Store at: -20°C

Summary

Product Description	Rabbit Polyclonal antibody recognizes ESD
Tested Reactivity	Hu, Ms, Rat
Tested Application	WB
Host	Rabbit
Clonality	Polyclonal
Isotype	IgG
Target Name	ESD
Species	Human
Immunogen	KLH-conjugated synthetic peptide corresponding to aa. 68-102 (Center) of Human ESD.
Conjugation	Un-conjugated
Alternate Names	Methylumbelliferyl-acetate deacetylase; Esterase D; EC 3.1.1.56; S-formylglutathione hydrolase; FGH; EC 3.1.2.12

Application Instructions

Application table	Application	Dilution
	WB	1:1000
Application Note	* The dilutions indicate recommended starting dilutions and the optimal dilutions or concentrations should be determined by the scientist.	
Positive Control	K562	

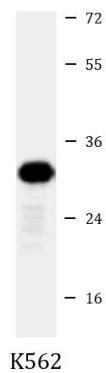
Properties

Form	Liquid
Purification	Purification with Protein A and immunogen peptide.
Buffer	PBS and 0.09% (W/V) Sodium azide.
Preservative	0.09% (W/V) Sodium azide.
Storage instruction	For continuous use, store undiluted antibody at 2-8°C for up to a week. For long-term storage, aliquot and store at -20°C or below. Storage in frost free freezers is not recommended. Avoid repeated freeze/thaw cycles. Suggest spin the vial prior to opening. The antibody solution should be gently mixed before use.
Note	For laboratory research only, not for drug, diagnostic or other use.

Bioinformation

Gene Symbol	ESD
Gene Full Name	esterase D
Background	This gene encodes a serine hydrolase that belongs to the esterase D family. The encoded enzyme is active toward numerous substrates including O-acetylated sialic acids, and it may be involved in the recycling of sialic acids. This gene is used as a genetic marker for retinoblastoma and Wilson's disease. [provided by RefSeq, Feb 2009]
Function	Serine hydrolase involved in the detoxification of formaldehyde. [UniProt]
Calculated Mw	31 kDa
Cellular Localization	Cytoplasm. Cytoplasmic vesicle.

Images



ARG55766 anti-ESD antibody WB image

Western blot: 35 µg of K562 cell lysate stained with ARG55766 anti-ESD antibody at 1:1000 dilution.