

ARG55765 anti-RPS21 antibody

Package: 100 µl
Store at: -20°C

Summary

Product Description	Rabbit Polyclonal antibody recognizes RPS21
Tested Reactivity	Hu
Predict Reactivity	Ms, Rat, Bov, Pig
Tested Application	WB
Host	Rabbit
Clonality	Polyclonal
Isotype	IgG
Target Name	RPS21
Species	Human
Immunogen	KLH-conjugated synthetic peptide corresponding to aa. 44-71 (C-terminus) of Human RPS21.
Conjugation	Un-conjugated
Alternate Names	HLDF; S21; 40S ribosomal protein S21

Application Instructions

Application table	<table><thead><tr><th>Application</th><th>Dilution</th></tr></thead><tbody><tr><td>WB</td><td>1:1000</td></tr></tbody></table>	Application	Dilution	WB	1:1000
Application	Dilution				
WB	1:1000				
Application Note	* The dilutions indicate recommended starting dilutions and the optimal dilutions or concentrations should be determined by the scientist.				
Positive Control	NCI-H460				

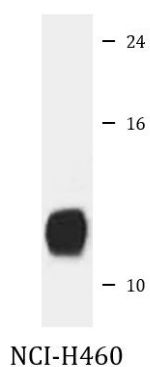
Properties

Form	Liquid
Purification	Purification with Protein A and immunogen peptide.
Buffer	PBS and 0.09% (W/V) Sodium azide.
Preservative	0.09% (W/V) Sodium azide.
Storage instruction	For continuous use, store undiluted antibody at 2-8°C for up to a week. For long-term storage, aliquot and store at -20°C or below. Storage in frost free freezers is not recommended. Avoid repeated freeze/thaw cycles. Suggest spin the vial prior to opening. The antibody solution should be gently mixed before use.
Note	For laboratory research only, not for drug, diagnostic or other use.

Bioinformation

Database links	GeneID: 6227 Human Swiss-port # P63220 Human
Gene Symbol	RPS21
Gene Full Name	ribosomal protein S21
Background	Ribosomes, the organelles that catalyze protein synthesis, consist of a small 40S subunit and a large 60S subunit. Together these subunits are composed of 4 RNA species and approximately 80 structurally distinct proteins. This gene encodes a ribosomal protein that is a component of the 40S subunit. The protein belongs to the S21E family of ribosomal proteins. It is located in the cytoplasm. Alternative splice variants that encode different protein isoforms have been described, but their existence has not been verified. As is typical for genes encoding ribosomal proteins, there are multiple processed pseudogenes of this gene dispersed through the genome. [provided by RefSeq, Jul 2008]
Calculated Mw	9 kDa

Images



ARG55765 anti-RPS21 antibody WB image

Western blot: 35 µg of NCI-H460 cell lysate stained with ARG55765 anti-RPS21 antibody.