

ARG55739
anti-RAB3 (pan) antibodyPackage: 100 µg
Store at: -20°C

Summary

Product Description	Goat Polyclonal antibody recognizes RAB3 (pan)
Tested Reactivity	Hu, Ms, Rat, Dog, Mk
Tested Application	ICC/IF, IHC-Fr, IHC-P, WB
Specificity	Detects total Rab3 protein in the following human, rat and mouse whole cell lysates and transfected cells with GFP-Rab3a, GFP-Rab3b and GFP-Rab3c cds by Western blot.
Host	Goat
Clonality	Polyclonal
Isotype	IgG
Target Name	RAB3 (pan)
Species	Mouse
Immunogen	Purified recombinant peptides around aa. 110 (C-terminus) of Mouse Rab3a
Conjugation	Un-conjugated
Alternate Names	Ras-related protein Rab-3A

Application Instructions

Application table	Application	Dilution
	ICC/IF	1:50-1:250
	IHC-Fr	1:250-1:1500
	IHC-P	1:250-1:1500
	WB	1:250-1:1000
Application Note	* The dilutions indicate recommended starting dilutions and the optimal dilutions or concentrations should be determined by the scientist.	

Properties

Form	Liquid
Purification	Affinity purification with immunogen.
Buffer	PBS, 0.05% Sodium azide and 20% Glycerol
Preservative	0.05% Sodium azide
Stabilizer	20% Glycerol
Concentration	3 mg/ml
Storage instruction	For continuous use, store undiluted antibody at 2-8°C for up to a week. For long-term storage, aliquot and store at -20°C. Storage in frost free freezers is not recommended. Avoid repeated freeze/thaw

cycles. Suggest spin the vial prior to opening. The antibody solution should be gently mixed before use.

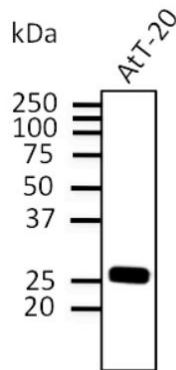
Note

For laboratory research only, not for drug, diagnostic or other use.

Bioinformation

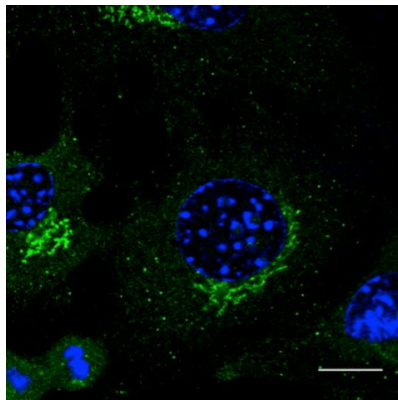
Gene Symbol	Rab3a
Gene Full Name	RAB3A, member RAS oncogene family
Function	Involved in exocytosis by regulating a late step in synaptic vesicle fusion. Could play a role in neurotransmitter release by regulating membrane flow in the nerve terminal (By similarity). [UniProt]
Calculated Mw	25 kDa

Images



ARG55739 anti-RAB3 (pan) antibody WB image

Western blot: 100 µg of AtT-20 cell lysate stained with ARG55739 anti-RAB3 (pan) antibody at 1:500 dilution.



ARG55739 anti-RAB3 (pan) antibody ICC/IF image

Immunocytochemistry: B6 cells stained with ARG55739 anti-RAB3 (pan) antibody at 1:50 dilution. Cells were fixed with methanol.