

ARG55729 anti-Maltose Binding Protein antibody

Package: 100 µg
Store at: -20°C

Summary

Product Description	Goat Polyclonal antibody recognizes Maltose Binding Protein
Tested Reactivity	Bacteria
Tested Application	WB
Specificity	In lysates of E. coli cells transformed with pMAL plasmids detects a band of 44 kDa by Western blot.
Host	Goat
Clonality	Polyclonal
Isotype	IgG
Target Name	Maltose Binding Protein
Immunogen	Purified recombinant peptide produced in E. coli
Conjugation	Un-conjugated
Alternate Names	malE; malJ; Maltose binding protein; maltose transporter subunit

Application Instructions

Application table	Application	Dilution
	WB	1:500-1:2000

Application Note * The dilutions indicate recommended starting dilutions and the optimal dilutions or concentrations should be determined by the scientist.

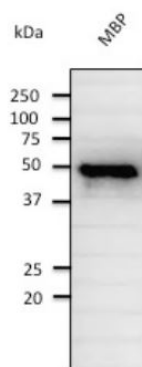
Properties

Form	Liquid
Purification	Affinity purification with immunogen.
Buffer	PBS, 0.05% Sodium azide and 20% Glycerol
Preservative	0.05% Sodium azide
Stabilizer	20% Glycerol
Concentration	3 mg/ml
Storage instruction	For continuous use, store undiluted antibody at 2-8°C for up to a week. For long-term storage, aliquot and store at -20°C. Storage in frost free freezers is not recommended. Avoid repeated freeze/thaw cycles. Suggest spin the vial prior to opening. The antibody solution should be gently mixed before use.
Note	For laboratory research only, not for drug, diagnostic or other use.

Bioinformation

Gene Symbol	malE
Gene Full Name	maltose transporter subunit
Background	Biofilm microarray result was validated with RT-PCR. [More information is available at EcoGene: EG10554]. In addition to being the periplasmic substrate-binding component of the maltose ABC transporter, MalE with bound substrate is also able to bind to the chemoreceptor Tar to induce chemotaxis toward maltose. [More information is available at EcoCyc: EG10554].
Function	Involved in the high-affinity maltose membrane transport system MalEFGK. Initial receptor for the active transport of and chemotaxis toward maltooligosaccharides. [UniProt]
Calculated Mw	43 kDa

Images



ARG55729 anti-Maltose Binding Protein antibody WB image

Western blot: MBP stained with ARG55729 anti-Maltose Binding Protein antibody at 1:2000 dilution.