

ARG55725 anti-Cre antibody

Package: 100 µg
Store at: -20°C

Summary

| | |
|---------------------|--|
| Product Description | Goat Polyclonal antibody recognizes Cre |
| Tested Reactivity | Other |
| Tested Application | WB |
| Specificity | In 293HEK cells transduced with Ad-Cre detects a band of 38 kDa by Western blot and gives a positive signal for the Cre recombinase protein. |
| Host | Goat |
| Clonality | Polyclonal |
| Isotype | IgG |
| Target Name | Cre |
| Immunogen | Purified recombinant peptide produced in E. coli |
| Conjugation | Un-conjugated |
| Alternate Names | Cyclization recombinase |

Application Instructions

| Application table | Application | Dilution |
|-------------------|--|--------------|
| | WB | 1:500-1:2000 |
| Application Note | * The dilutions indicate recommended starting dilutions and the optimal dilutions or concentrations should be determined by the scientist. | |

Properties

| | |
|---------------------|---|
| Form | Liquid |
| Purification | Affinity purification with immunogen. |
| Buffer | PBS, 0.05% Sodium azide and 20% Glycerol |
| Preservative | 0.05% Sodium azide |
| Stabilizer | 20% Glycerol |
| Concentration | 3 mg/ml |
| Storage instruction | For continuous use, store undiluted antibody at 2-8°C for up to a week. For long-term storage, aliquot and store at -20°C. Storage in frost free freezers is not recommended. Avoid repeated freeze/thaw cycles. Suggest spin the vial prior to opening. The antibody solution should be gently mixed before use. |
| Note | For laboratory research only, not for drug, diagnostic or other use. |

Bioinformation

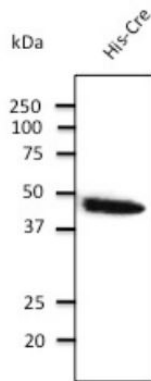
Background

Cre recombinase is a tyrosine recombinase enzyme derived from the P1 bacteriophage. The enzyme (38 kDa) is a member of the Integrase family of site specific recombinase and it is known to catalyse the site specific recombination event between two DNA recognition sites (loxP sites).

Calculated Mw

38 kDa

Images



ARG55725 anti-Cre antibody WB image

Western blot: His-tagged Cre protein stained with ARG55725 anti-Cre antibody at 1:2000 dilution.