

ARG55718 anti-CTRP5 antibody

Package: 50 µg
Store at: -20°C

Summary

Product Description	Rabbit Polyclonal antibody recognizes CTRP5
Tested Reactivity	Hu
Predict Reactivity	Rat
Tested Application	IHC-P, WB
Specificity	These proteins are often highly modified post-translationally and migrate in SDS-PAGE at positions other than their predicted size.
Host	Rabbit
Clonality	Polyclonal
Isotype	IgG
Target Name	CTRP5
Species	Human
Immunogen	Synthetic peptide (15 aa) within aa. 30-80 of Human CTRP5.
Conjugation	Un-conjugated
Alternate Names	CTRP5; Complement C1q tumor necrosis factor-related protein 5

Application Instructions

Application table	Application	Dilution
	IHC-P	10 µg/ml
	WB	1 - 4 µg/ml
Application Note	* The dilutions indicate recommended starting dilutions and the optimal dilutions or concentrations should be determined by the scientist.	
Positive Control	Human Brain Tissue Lysate	

Properties

Form	Liquid
Purification	Affinity purification with immunogen.
Buffer	PBS and 0.02% Sodium azide
Preservative	0.02% Sodium azide
Concentration	1 mg/ml
Storage instruction	For continuous use, store undiluted antibody at 2-8°C for up to a week. For long-term storage, aliquot and store at -20°C or below. Storage in frost free freezers is not recommended. Avoid repeated freeze/thaw cycles. Suggest spin the vial prior to opening. The antibody solution should be gently mixed before use.

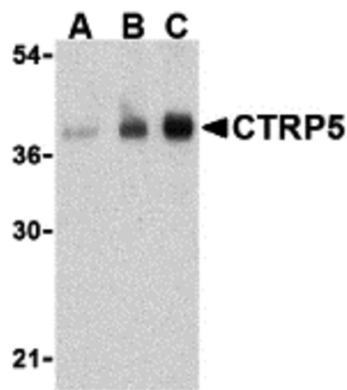
Note

For laboratory research only, not for drug, diagnostic or other use.

Bioinformation

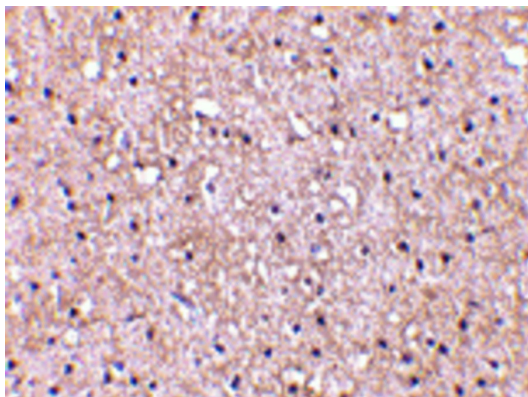
Database links	GeneID: 114902 Human Swiss-port # Q9BXJ0 Human
Gene Symbol	C1QTNF5
Gene Full Name	C1q and tumor necrosis factor related protein 5
Background	This gene encodes a member of a family of proteins that function as components of basement membranes and may play a role in cell adhesion. Mutations in this gene have been associated with late-onset retinal degeneration. The protein may be encoded by either a bicistronic transcript including sequence from the upstream membrane frizzled-related protein gene (MFRP), or by a monocistronic transcript expressed from an internal promoter. [provided by RefSeq, Jun 2013]
Calculated Mw	25 kDa

Images



ARG55718 anti-CTRP5 antibody WB image

Western blot: Human brain cell lysate stained with ARG55718 anti-CTRP5 antibody at (A) 1, (B) 2, and (C) 4 $\mu\text{g}/\text{ml}$ dilution.



ARG55718 anti-CTRP5 antibody IHC-P image

Immunohistochemistry: Human brain tissue stained with ARG55718 anti-CTRP5 antibody at 10 $\mu\text{g}/\text{ml}$ dilution.