

ARG55712
anti-CD56 / NCAM antibodyPackage: 100 µl
Store at: -20°C

Summary

Product Description	Rabbit Polyclonal antibody recognizes CD56 / NCAM
Tested Reactivity	Hu
Tested Application	FACS, IHC-P, WB
Host	Rabbit
Clonality	Polyclonal
Isotype	IgG
Target Name	CD56 / NCAM
Species	Human
Immunogen	KLH-conjugated synthetic peptide corresponding to aa. 796-830 (C-terminus) of Human CD56.
Conjugation	Un-conjugated
Alternate Names	CD56; NCAM; CD antigen CD56; N-CAM-1; MSK39; NCAM-1; Neural cell adhesion molecule 1

Application Instructions

Application table	Application	Dilution
	FACS	1:25
	IHC-P	1:25
	WB	1:1000
Application Note	* The dilutions indicate recommended starting dilutions and the optimal dilutions or concentrations should be determined by the scientist.	
Positive Control	SW480	

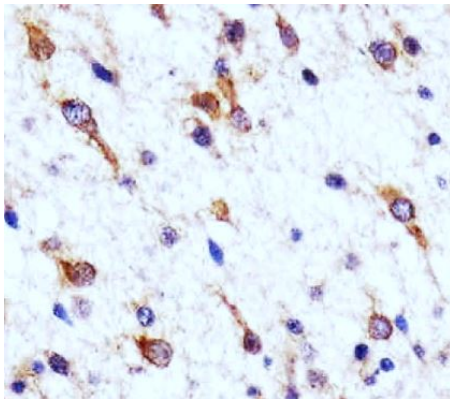
Properties

Form	Liquid
Purification	Purification with Protein A and immunogen peptide.
Buffer	PBS and 0.09% (W/V) sodium azide.
Preservative	0.09% (W/V) sodium azide.
Storage instruction	For continuous use, store undiluted antibody at 2-8°C for up to a week. For long-term storage, aliquot and store at -20°C or below. Storage in frost free freezers is not recommended. Avoid repeated freeze/thaw cycles. Suggest spin the vial prior to opening. The antibody solution should be gently mixed before use.
Note	For laboratory research only, not for drug, diagnostic or other use.

Bioinformation

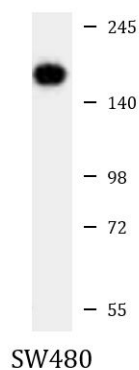
Database links	GeneID: 4684 Human Swiss-port # P13591 Human
Gene Symbol	NCAM1
Gene Full Name	neural cell adhesion molecule 1
Background	This gene encodes a cell adhesion protein which is a member of the immunoglobulin superfamily. The encoded protein is involved in cell-to-cell interactions as well as cell-matrix interactions during development and differentiation. The encoded protein has been shown to be involved in development of the nervous system, and for cells involved in the expansion of T cells and dendritic cells which play an important role in immune surveillance. Alternative splicing results in multiple transcript variants. [provided by RefSeq, Jun 2011]
Function	This protein is a cell adhesion molecule involved in neuron-neuron adhesion, neurite fasciculation, outgrowth of neurites, etc. [UniProt]
Highlight	Related products: CD56 antibodies ; CD56 ELISA Kits ; CD56 Duos / Panels ; Anti-Rabbit IgG secondary antibodies ; Related news: Tumor-Infiltrating Lymphocytes (TILs)
Research Area	Developmental Biology antibody; Neuroscience antibody; General Lymphocyte Marker Study antibody; Natural killer cells antibody
Calculated Mw	95 kDa
Cellular Localization	Isoform 1: Cell membrane; Single-pass type I membrane protein Isoform 3: Cell membrane; Lipid-anchor, GPI- anchor Isoform 5: Secreted.

Images



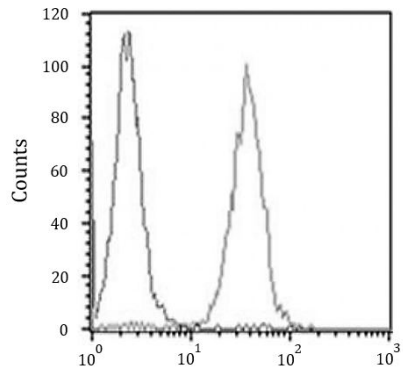
ARG55712 anti-CD56 / NCAM antibody IHC-P image

Immunohistochemistry: Paraffin-embedded Human astroglioma tissue stained with ARG55712 anti-CD56 / NCAM antibody at 1:25 dilution.



ARG55712 anti-CD56 / NCAM antibody WB image

Western blot: 20 µg of SW480 cell lysate stained with ARG55712 anti-CD56 / NCAM antibody at 1:1000 dilution.



ARG55712 anti-CD56 / NCAM antibody FACS image

Flow Cytometry: SH-SY5Y cells stained with ARG55712 anti-CD56 / NCAM antibody (right histogram) at 1:25 dilution or isotype control antibody (left histogram), followed by incubation with Alexa Fluor® 488 labelled secondary antibody.