

ARG55678 anti-Maspin antibody

Package: 100 µl
Store at: -20°C

Summary

Product Description	Rabbit Polyclonal antibody recognizes Maspin
Tested Reactivity	Hu
Predict Reactivity	Ms
Tested Application	ICC/IF, IHC-P, WB
Host	Rabbit
Clonality	Polyclonal
Isotype	IgG
Target Name	Maspin
Species	Human
Immunogen	KLH-conjugated synthetic peptide corresponding to aa. 94-123 (Center) of Human Maspin.
Conjugation	Un-conjugated
Alternate Names	PI-5; PI5; Maspin; Serpin B5; maspin; Peptidase inhibitor 5

Application Instructions

Application table	Application	Dilution
	ICC/IF	1:10 - 1:50
	IHC-P	1:50 - 1:100
	WB	1:1000
Application Note	* The dilutions indicate recommended starting dilutions and the optimal dilutions or concentrations should be determined by the scientist.	
Positive Control	HeLa	

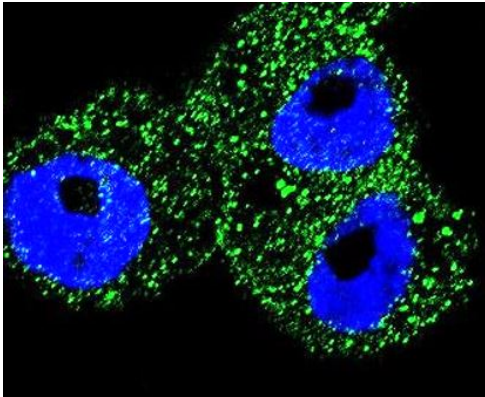
Properties

Form	Liquid
Purification	Purification with Protein A and immunogen peptide.
Buffer	PBS and 0.09% (W/V) Sodium azide.
Preservative	0.09% (W/V) Sodium azide.
Storage instruction	For continuous use, store undiluted antibody at 2-8°C for up to a week. For long-term storage, aliquot and store at -20°C or below. Storage in frost free freezers is not recommended. Avoid repeated freeze/thaw cycles. Suggest spin the vial prior to opening. The antibody solution should be gently mixed before use.
Note	For laboratory research only, not for drug, diagnostic or other use.

Bioinformation

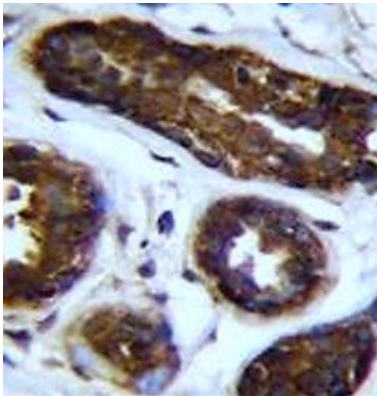
Database links	GeneID: 5268 Human Swiss-port # P36952 Human
Gene Symbol	SERPINB5
Gene Full Name	serpin peptidase inhibitor, clade B (ovalbumin), member 5
Function	Tumor suppressor. It blocks the growth, invasion, and metastatic properties of mammary tumors. As it does not undergo the S (stressed) to R (relaxed) conformational transition characteristic of active serpins, it exhibits no serine protease inhibitory activity. [UniProt]
Calculated Mw	42 kDa
Cellular Localization	Secreted, extracellular space.

Images



ARG55678 anti-Maspin antibody ICC/IF image

Immunofluorescence: A2058 cells stained with ARG55678 anti-Maspin antibody (green). DAPI (blue) for nuclear staining.



ARG55678 anti-Maspin antibody IHC-P image

Immunohistochemistry: Formalin-fixed and paraffin-embedded Human breast tissue stained with ARG55678 anti-Maspin antibody.

ARG55678 anti-Maspin antibody WB image

Western blot: 35 µg of HeLa cell lysate stained with ARG55678 anti-Maspin antibody at 1:1000 dilution.

