

ARG55677 anti-Hemoglobin beta antibody

Package: 100 µl
Store at: -20°C

Summary

Product Description	Rabbit Polyclonal antibody recognizes Hemoglobin beta
Tested Reactivity	Hu
Predict Reactivity	Ms, Rat, Bov, Chk, Pig, Rb
Tested Application	FACS, IHC-P, WB
Host	Rabbit
Clonality	Polyclonal
Isotype	IgG
Target Name	Hemoglobin beta
Species	Human
Immunogen	KLH-conjugated synthetic peptide corresponding to aa. 80-107 (C-terminus) of Human Hemoglobin beta.
Conjugation	Un-conjugated
Alternate Names	CD113t-C; beta-globin; Beta-globin; Hemoglobin beta chain; Hemoglobin subunit beta

Application Instructions

Application table	Application	Dilution
	FACS	1:10 - 1:50
	IHC-P	1:10 - 1:50
	WB	1:1000
Application Note	* The dilutions indicate recommended starting dilutions and the optimal dilutions or concentrations should be determined by the scientist.	
Positive Control	Human heart	

Properties

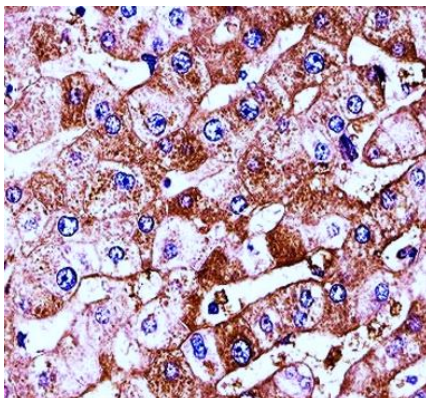
Form	Liquid
Purification	Purification with Protein A and immunogen peptide.
Buffer	PBS and 0.09% (W/V) Sodium azide.
Preservative	0.09% (W/V) Sodium azide.
Storage instruction	For continuous use, store undiluted antibody at 2-8°C for up to a week. For long-term storage, aliquot and store at -20°C or below. Storage in frost free freezers is not recommended. Avoid repeated freeze/thaw cycles. Suggest spin the vial prior to opening. The antibody solution should be gently mixed before use.

Note For laboratory research only, not for drug, diagnostic or other use.

Bioinformation

Database links	GeneID: 3043 Human Swiss-port # P68871 Human
Gene Symbol	HBB
Gene Full Name	hemoglobin, beta
Background	The alpha (HBA) and beta (HBB) loci determine the structure of the 2 types of polypeptide chains in adult hemoglobin, Hb A. The normal adult hemoglobin tetramer consists of two alpha chains and two beta chains. Mutant beta globin causes sickle cell anemia. Absence of beta chain causes beta-zero-thalassemia. Reduced amounts of detectable beta globin causes beta-plus-thalassemia. The order of the genes in the beta-globin cluster is 5'-epsilon -- gamma-G -- gamma-A -- delta -- beta--3'. [provided by RefSeq, Jul 2008]
Function	Involved in oxygen transport from the lung to the various peripheral tissues. LVV-hemorphin-7 potentiates the activity of bradykinin, causing a decrease in blood pressure. Spinorphin: functions as an endogenous inhibitor of enkephalin-degrading enzymes such as DPP3, and as a selective antagonist of the P2RX3 receptor which is involved in pain signaling, these properties implicate it as a regulator of pain and inflammation. [UniProt]
Calculated Mw	16 kDa
PTM	Glucose reacts non-enzymatically with the N-terminus of the beta chain to form a stable ketoamine linkage. This takes place slowly and continuously throughout the 120-day life span of the red blood cell. The rate of glycation is increased in patients with diabetes mellitus. S-nitrosylated; a nitric oxide group is first bound to Fe(2+) and then transferred to Cys-94 to allow capture of O(2). Acetylated on Lys-60, Lys-83 and Lys-145 upon aspirin exposure.

Images

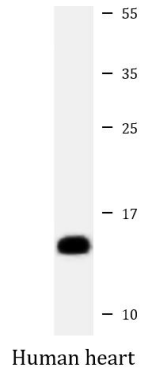


ARG55677 anti-Hemoglobin beta antibody IHC-P image

Immunohistochemistry: Formalin-fixed and paraffin-embedded Human liver tissue stained with ARG55677 anti-Hemoglobin beta antibody .

ARG55677 anti-Hemoglobin beta antibody WB image

Western blot: 20 µg of Human heart lysate stained with ARG55677 anti-Hemoglobin beta antibody at 1:2000 dilution.



ARG55677 anti-Hemoglobin beta antibody FACS image

Flow Cytometry: K562 cells stained with ARG55677 anti-Hemoglobin beta antibody (right histogram) or without primary antibody as control (left histogram), followed by incubation with FITC labelled secondary antibody.

