

**ARG55669**  
anti-HLA G antibodyPackage: 100 µl  
Store at: -20°C

### Summary

Product Description	Mouse Monoclonal antibody recognizes HLA G
Tested Reactivity	Hu
Tested Application	WB
Host	Mouse
Clonality	Monoclonal
Clone	800CT6.4.2
Isotype	IgG1
Target Name	HLA G
Species	Human
Immunogen	Purified His-tagged Human HLA-G.
Conjugation	Un-conjugated
Alternate Names	HLA G antigen; MHC class I antigen G; HLA class I histocompatibility antigen, alpha chain G; MHC-G

### Application Instructions

Application table	Application	Dilution
	WB	1:1000
Application Note	* The dilutions indicate recommended starting dilutions and the optimal dilutions or concentrations should be determined by the scientist.	
Positive Control	A549	

### Properties

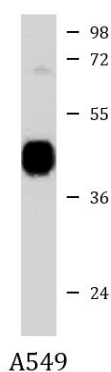
Form	Liquid
Purification	Purification with Protein G.
Buffer	PBS and 0.09% (W/V) Sodium azide.
Preservative	0.09% (W/V) Sodium azide.
Storage instruction	For continuous use, store undiluted antibody at 2-8°C for up to a week. For long-term storage, aliquot and store at -20°C or below. Storage in frost free freezers is not recommended. Avoid repeated freeze/thaw cycles. Suggest spin the vial prior to opening. The antibody solution should be gently mixed before use.
Note	For laboratory research only, not for drug, diagnostic or other use.

### Bioinformation

Database links	<a href="#">GeneID: 3135 Human</a> <a href="#">Swiss-port # P17693 Human</a>
Gene Symbol	HLA-G
Gene Full Name	major histocompatibility complex, class I, G
Background	HLA-G belongs to the HLA class I heavy chain paralogues. This class I molecule is a heterodimer consisting of a heavy chain and a light chain (beta-2 microglobulin). The heavy chain is anchored in the membrane. HLA-G is expressed on fetal derived placental cells. The heavy chain is approximately 45 kDa and its gene contains 8 exons. Exon one encodes the leader peptide, exons 2 and 3 encode the alpha1 and alpha2 domain, which both bind the peptide, exon 4 encodes the alpha3 domain, exon 5 encodes the transmembrane region, and exon 6 encodes the cytoplasmic tail. [provided by RefSeq, Jul 2008]
Function	Involved in the presentation of foreign antigens to the immune system. Plays a role in maternal tolerance of the fetus by mediating protection from the deleterious effects of natural killer cells, cytotoxic T-lymphocytes, macrophages and mononuclear cells. [UniProt]
Calculated Mw	38 kDa
Cellular Localization	Membrane; Single-pass type I membrane protein

## Images

---



ARG55669 anti-HLA G antibody WB image

Western blot: 35 µg of A549 cell lysate stained with ARG55669 anti-HLA G antibody.