

ARG55590 anti-LDHA / Lactate Dehydrogenase antibody

Package: 100 µl

Store at: -20°C

Summary

Product Description	Rabbit Polyclonal antibody recognizes LDHA / Lactate Dehydrogenase
Tested Reactivity	Hu, Mk
Predict Reactivity	Bov, Rat, Pig
Tested Application	FACS, IHC-P, WB
Host	Rabbit
Clonality	Polyclonal
Isotype	IgG
Target Name	LDHA / Lactate Dehydrogenase
Species	Human
Immunogen	KLH-conjugated synthetic peptide corresponding to aa. 154-182 (Center) of Human LDHA.
Conjugation	Un-conjugated
Alternate Names	PIG19; Cell proliferation-inducing gene 19 protein; LDH muscle subunit; Renal carcinoma antigen NY-REN-59; HEL-S-133P; L-lactate dehydrogenase A chain; GSD11; LDHM; EC 1.1.1.27; LDH-M; LDH-A

Application Instructions

Application table	Application	Dilution
	FACS	1:10 - 1:50
	IHC-P	1:50 - 1:100
	WB	1:1000
Application Note	* The dilutions indicate recommended starting dilutions and the optimal dilutions or concentrations should be determined by the scientist.	
Positive Control	Ramos	

Properties

Form	Liquid
Purification	Purification with Protein A and immunogen peptide.
Buffer	PBS and 0.09% (W/V) Sodium azide
Preservative	0.09% (W/V) Sodium azide
Storage instruction	For continuous use, store undiluted antibody at 2-8°C for up to a week. For long-term storage, aliquot and store at -20°C or below. Storage in frost free freezers is not recommended. Avoid repeated freeze/thaw cycles. Suggest spin the vial prior to opening. The antibody solution should be gently mixed before use.

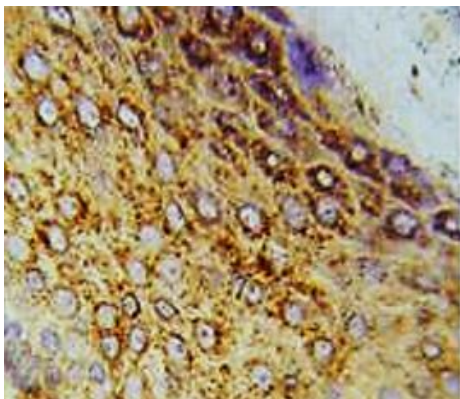
Note

For laboratory research only, not for drug, diagnostic or other use.

Bioinformation

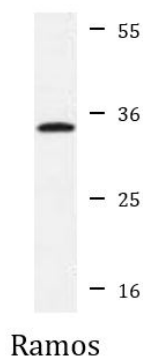
Database links	GeneID: 3939 Human Swiss-port # P00338 Human
Gene Symbol	LDHA
Gene Full Name	lactate dehydrogenase A
Background	The protein encoded by this gene catalyzes the conversion of L-lactate and NAD to pyruvate and NADH in the final step of anaerobic glycolysis. The protein is found predominantly in muscle tissue and belongs to the lactate dehydrogenase family. Mutations in this gene have been linked to exertional myoglobinuria. Multiple transcript variants encoding different isoforms have been found for this gene. The human genome contains several non-transcribed pseudogenes of this gene. [provided by RefSeq, Sep 2008]
Research Area	Cancer antibody; Metabolism antibody; Signaling Transduction antibody; Lactate dehydrogenase antibody; Warburg Effect signaling pathway antibody
Calculated Mw	37 kDa
PTM	ISGylated.
Cellular Localization	Cytoplasm.

Images



ARG55590 anti-LDHA / Lactate Dehydrogenase antibody IHC-P image

Immunohistochemistry: Formalin-fixed and paraffin-embedded Human skin tissue stained with ARG55590 anti-LDHA / Lactate Dehydrogenase antibody.



ARG55590 anti-LDHA / Lactate Dehydrogenase antibody WB image

Western blot: 35 µg of Ramos cell lysate stained with ARG55590 anti-LDHA / Lactate Dehydrogenase antibody.

ARG55590 anti-LDHA / Lactate Dehydrogenase antibody FACS image

Flow Cytometry: HeLa cells stained with ARG55590 anti-LDHA / Lactate Dehydrogenase antibody (bottom histogram) or without primary antibody as control (top histogram), followed by incubation with FITC labelled secondary antibody.

