

## ARG55549 anti-Islet 1 antibody

Package: 100 µl  
Store at: -20°C

### Summary

|                     |  |
|---------------------|--|
| Product Description | Rabbit Polyclonal antibody recognizes Islet 1  |
| Tested Reactivity   | Hu, Ms, Rat  |
| Tested Application  | WB   |
| Host                | Rabbit   |
| Clonality           | Polyclonal   |
| Isotype             | IgG  |
| Target Name         | Islet 1  |
| Species             | Human  |
| Immunogen           | Recombinant protein of Human Islet-1 (NP_002193.2).  |
| Conjugation         | Un-conjugated  |
| Alternate Names     | ISL1; ISL LIM Homeobox 1; ISLET1; Isl-1; Insulin Gene Enhancer Protein ISL-1; Islet-1; ISL1 Transcription Factor, LIM/Homeodomain, (Islet-1) |

### Application Instructions

|                   |  |                |
|-------------------|--|----------------|
| Application table | Application  | Dilution       |
|                   | WB   | 1:500 - 1:2000 |
| Application Note  | * The dilutions indicate recommended starting dilutions and the optimal dilutions or concentrations should be determined by the scientist. |                |
| Positive Control  | Mouse thymus   |                |

### Properties

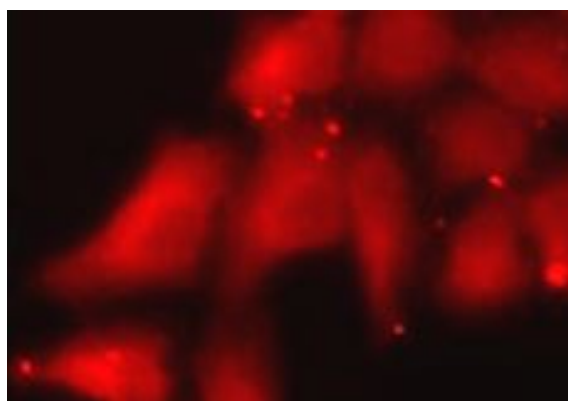
|                     |   |
|---------------------|---|
| Form                | Liquid  |
| Purification        | Affinity purification with immunogen.   |
| Buffer              | PBS (pH 7.3), 0.02% Sodium azide and 50% Glycerol   |
| Preservative        | 0.02% Sodium azide  |
| Stabilizer          | 50% Glycerol  |
| Storage instruction | For continuous use, store undiluted antibody at 2-8°C for up to a week. For long-term storage, aliquot and store at -20°C. Storage in frost free freezers is not recommended. Avoid repeated freeze/thaw cycles. Suggest spin the vial prior to opening. The antibody solution should be gently mixed before use. |
| Note                | For laboratory research only, not for drug, diagnostic or other use.  |

### Bioinformation

|                       |   |
|-----------------------|---|
| Gene Symbol           | ISL1  |
| Gene Full Name        | ISL LIM homeobox 1  |
| Background            | This gene encodes a member of the LIM/homeodomain family of transcription factors. The encoded protein binds to the enhancer region of the insulin gene, among others, and may play an important role in regulating insulin gene expression. The encoded protein is central to the development of pancreatic cell lineages and may also be required for motor neuron generation. Mutations in this gene have been associated with maturity-onset diabetes of the young.   |
| Function              | DNA-binding transcriptional activator. Recognizes and binds to the consensus octamer binding site 5'-ATAATTAA-3' in promoter of target genes. Plays a fundamental role in the gene regulatory network essential for retinal ganglion cell (RGC) differentiation. Cooperates with the transcription factor POU4F2 to achieve maximal levels of expression of RGC target genes and RGC fate specification in the developing retina. Involved in the specification of motor neurons in cooperation with LHX3 and LDB1 (By similarity). |
| Research Area         | Cell Biology and Cellular Response antibody; Controls and Markers antibody; Developmental Biology antibody; Neuroscience antibody   |
| Calculated Mw         | 39 kDa  |
| PTM                   | Phosphoprotein, Ubl conjugation   |
| Cellular Localization | Nucleus   |

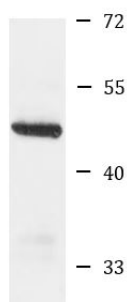
## Images

---



ARG55549 anti-Islet 1 antibody ICC/IF image

Immunofluorescence: A549 cells stained with ARG55549 anti-Islet 1 antibody.



Mouse thymus

ARG55549 anti-Islet 1 antibody WB image

Western blot: Mouse thymus lysate stained with ARG55549 anti-Islet 1 antibody.