

ARG55530 anti-SHMT1 antibody

Package: 100 µl
Store at: -20°C

Summary

Product Description	Rabbit Polyclonal antibody recognizes SHMT1
Tested Reactivity	Hu
Predict Reactivity	Bov
Tested Application	IHC-P, WB
Host	Rabbit
Clonality	Polyclonal
Isotype	IgG
Target Name	SHMT1
Species	Human
Immunogen	KLH-conjugated synthetic peptide corresponding to aa. 19-47 (N-terminus) of Human SHMT1.
Conjugation	Un-conjugated
Alternate Names	EC 2.1.2.1; SHMT; CSHMT; Serine methylase; Glycine hydroxymethyltransferase; Serine hydroxymethyltransferase, cytosolic

Application Instructions

Application table	Application	Dilution
	IHC-P	1:10 - 1:50
	WB	1:1000
Application Note	* The dilutions indicate recommended starting dilutions and the optimal dilutions or concentrations should be determined by the scientist.	
Positive Control	293	

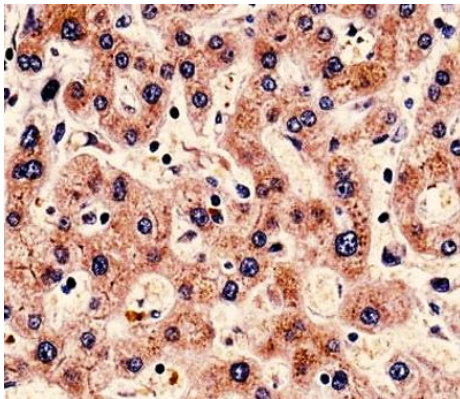
Properties

Form	Liquid
Purification	Purification with Protein A and immunogen peptide
Buffer	PBS and 0.09% (W/V) Sodium azide
Preservative	0.09% (W/V) Sodium azide
Storage instruction	For continuous use, store undiluted antibody at 2-8°C for up to a week. For long-term storage, aliquot and store at -20°C or below. Storage in frost free freezers is not recommended. Avoid repeated freeze/thaw cycles. Suggest spin the vial prior to opening. The antibody solution should be gently mixed before use.
Note	For laboratory research only, not for drug, diagnostic or other use.

Bioinformation

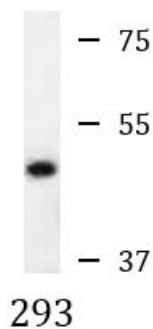
Database links	GeneID: 6470 Human Swiss-port # P34896 Human
Gene Symbol	SHMT1
Gene Full Name	serine hydroxymethyltransferase 1 (soluble)
Background	This gene encodes the cytosolic form of serine hydroxymethyltransferase, a pyridoxal phosphate-containing enzyme that catalyzes the reversible conversion of serine and tetrahydrofolate to glycine and 5,10-methylene tetrahydrofolate. This reaction provides one-carbon units for synthesis of methionine, thymidylate, and purines in the cytoplasm. This gene is located within the Smith-Magenis syndrome region on chromosome 17. A pseudogene of this gene is located on the short arm of chromosome 1. Alternative splicing results in multiple transcript variants. [provided by RefSeq, Aug 2013]
Function	Interconversion of serine and glycine. [UniProt]
Research Area	Metabolism antibody; Signaling Transduction antibody
Calculated Mw	53 kDa

Images



ARG55530 anti-SHMT1 antibody IHC-P image

Immunohistochemistry: Formalin-fixed and paraffin-embedded Human liver tissue stained with ARG55530 anti-SHMT1 antibody.



ARG55530 anti-SHMT1 antibody WB image

Western blot: 35 µg of 293 cell lysate stained with ARG55530 anti-SHMT1 antibody.