

ARG55508 anti-HMG20A antibody

Package: 100 µl
Store at: -20°C

Summary

Product Description	Rabbit Polyclonal antibody recognizes HMG20A
Tested Reactivity	Hu, Ms, Rat
Tested Application	ICC/IF, WB
Host	Rabbit
Clonality	Polyclonal
Isotype	IgG
Target Name	HMG20A
Species	Human
Immunogen	Recombinant protein of Human HMG20A
Conjugation	Un-conjugated
Alternate Names	HMGXB1; High mobility group protein 20A; HMGX1; HMG box-containing protein 20A; HMG domain-containing protein 1; HMG domain-containing protein HMGX1

Application Instructions

Predict Reactivity Note	Rat						
Application table	<table><thead><tr><th>Application</th><th>Dilution</th></tr></thead><tbody><tr><td>ICC/IF</td><td>1:50 - 1:200</td></tr><tr><td>WB</td><td>1:500 - 1:2000</td></tr></tbody></table>	Application	Dilution	ICC/IF	1:50 - 1:200	WB	1:500 - 1:2000
Application	Dilution						
ICC/IF	1:50 - 1:200						
WB	1:500 - 1:2000						
Application Note	* The dilutions indicate recommended starting dilutions and the optimal dilutions or concentrations should be determined by the scientist.						

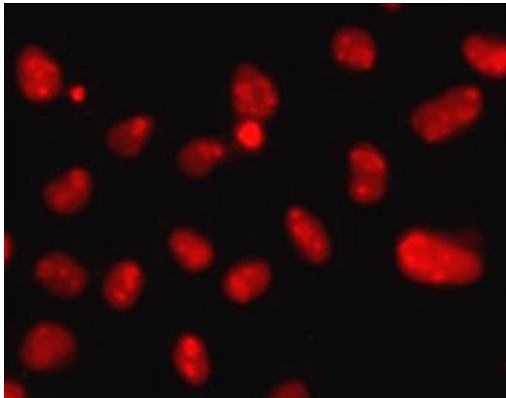
Properties

Form	Liquid
Purification	Affinity purification with immunogen.
Buffer	PBS (pH 7.3), 0.02% Sodium azide and 50% Glycerol
Preservative	0.02% Sodium azide
Stabilizer	50% Glycerol
Storage instruction	For continuous use, store undiluted antibody at 2-8°C for up to a week. For long-term storage, aliquot and store at -20°C. Storage in frost free freezers is not recommended. Avoid repeated freeze/thaw cycles. Suggest spin the vial prior to opening. The antibody solution should be gently mixed before use.
Note	For laboratory research only, not for drug, diagnostic or other use.

Bioinformation

Database links	GeneID: 10363 Human GeneID: 66867 Mouse Swiss-port # Q9DC33 Mouse Swiss-port # Q9NP66 Human
Gene Symbol	HMG20A
Gene Full Name	high mobility group 20A
Function	Plays a role in neuronal differentiation as chromatin-associated protein. Acts as inhibitor of HMG20B. Overcomes the repressive effects of the neuronal silencer REST and induces the activation of neuronal-specific genes. Involved in the recruitment of the histone methyltransferase KMT2A/MLL1 and consequent increased methylation of histone H3 lysine 4 (By similarity). [UniProt]
Research Area	Gene Regulation antibody
Calculated Mw	40 kDa

Images



ARG55508 anti-HMG20A antibody ICC/IF image

Immunofluorescence: MCF7 cells stained with ARG55508 anti-HMG20A antibody.