

ARG55486 anti-HAX1 antibody

Package: 100 µl
Store at: -20°C

Summary

Product Description	Rabbit Polyclonal antibody recognizes HAX1
Tested Reactivity	Hu, Ms, Rat
Tested Application	ICC/IF, WB
Host	Rabbit
Clonality	Polyclonal
Isotype	IgG
Target Name	HAX1
Species	Human
Immunogen	Recombinant protein of Human HAX1
Conjugation	Un-conjugated
Alternate Names	HCLS1-associated protein X-1; HS1BP1; HAX-1; HS1-binding protein 1; HS1-associating protein X-1; HSP1BP-1; SCN3; HCLSBP1

Application Instructions

Predict Reactivity Note	Rat						
Application table	<table><thead><tr><th>Application</th><th>Dilution</th></tr></thead><tbody><tr><td>ICC/IF</td><td>1:50 - 1:200</td></tr><tr><td>WB</td><td>1:500 - 1:2000</td></tr></tbody></table>	Application	Dilution	ICC/IF	1:50 - 1:200	WB	1:500 - 1:2000
Application	Dilution						
ICC/IF	1:50 - 1:200						
WB	1:500 - 1:2000						
Application Note	* The dilutions indicate recommended starting dilutions and the optimal dilutions or concentrations should be determined by the scientist.						
Positive Control	Mouse brain and SH-SY5Y						

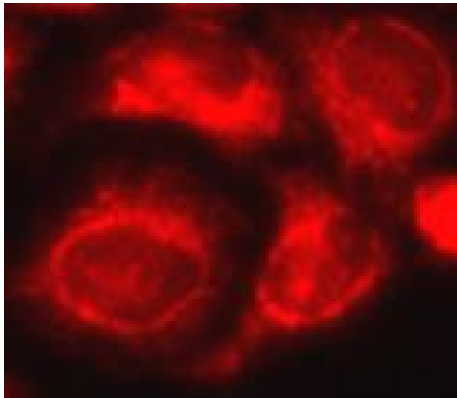
Properties

Form	Liquid
Purification	Affinity purification with immunogen.
Buffer	PBS (pH 7.3), 0.02% Sodium azide and 50% Glycerol
Preservative	0.02% Sodium azide
Stabilizer	50% Glycerol
Storage instruction	For continuous use, store undiluted antibody at 2-8°C for up to a week. For long-term storage, aliquot and store at -20°C. Storage in frost free freezers is not recommended. Avoid repeated freeze/thaw cycles. Suggest spin the vial prior to opening. The antibody solution should be gently mixed before use.
Note	For laboratory research only, not for drug, diagnostic or other use.

Bioinformation

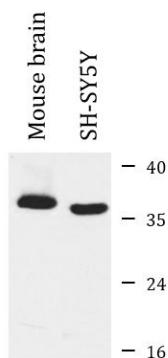
Gene Symbol	HAX1
Gene Full Name	HCLS1 associated protein X-1
Background	The protein encoded by this gene is known to associate with hematopoietic cell-specific Lyn substrate 1, a substrate of Src family tyrosine kinases. It also interacts with the product of the polycystic kidney disease 2 gene, mutations in which are associated with autosomal-dominant polycystic kidney disease, and with the F-actin-binding protein, cortactin. It was earlier thought that this gene product is mainly localized in the mitochondria, however, recent studies indicate it to be localized in the cell body. Mutations in this gene result in autosomal recessive severe congenital neutropenia, also known as Kostmann disease. Two transcript variants encoding different isoforms have been found for this gene. [provided by RefSeq, Jul 2008]
Function	Promotes cell survival. Potentiates GNA13-mediated cell migration. Involved in the clathrin-mediated endocytosis pathway. May be involved in internalization of ABC transporters such as ABCB11. May inhibit CASP9 and CASP3. May regulate intracellular calcium pools. [UniProt]
Research Area	Cancer antibody; Cell Biology and Cellular Response antibody; Cell Death antibody; Gene Regulation antibody; Metabolism antibody
Calculated Mw	32 kDa
PTM	Proteolytically cleaved by caspase-3 during apoptosis.

Images



ARG55486 anti-HAX1 antibody ICC/IF image

Immunofluorescence: A549 cells stained with ARG55486 anti-HAX1 antibody.



ARG55486 anti-HAX1 antibody WB image

Western blot: Mouse brain and SH-SY5Y cell lysates stained with ARG55486 anti-HAX1 antibody.