

ARG55478 anti-Prostaglandin E Receptor EP1 antibody

Package: 100 µl
Store at: -20°C

Summary

Product Description	Rabbit Polyclonal antibody recognizes Prostaglandin E Receptor EP1
Tested Reactivity	Ms
Tested Application	WB
Host	Rabbit
Clonality	Polyclonal
Isotype	IgG
Target Name	Prostaglandin E Receptor EP1
Species	Human
Immunogen	Synthetic peptide of Human PTGER1 (NP_000946.2)
Conjugation	Un-conjugated
Alternate Names	PGE2 receptor EP1 subtype; Prostanoid EP1 receptor; PGE receptor EP1 subtype; Prostaglandin E2 receptor EP1 subtype; EP1

Application Instructions

Predict Reactivity Note	Mouse, Rat				
Application table	<table><thead><tr><th>Application</th><th>Dilution</th></tr></thead><tbody><tr><td>WB</td><td>1:500 - 1:2000</td></tr></tbody></table>	Application	Dilution	WB	1:500 - 1:2000
Application	Dilution				
WB	1:500 - 1:2000				
Application Note	* The dilutions indicate recommended starting dilutions and the optimal dilutions or concentrations should be determined by the scientist.				
Positive Control	Romas				
Observed Size	42 kDa				

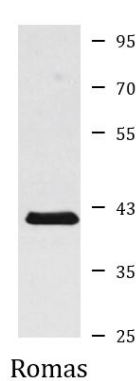
Properties

Form	Liquid
Purification	Affinity purification with immunogen.
Buffer	PBS (pH 7.3), 0.02% Sodium azide and 50% Glycerol
Preservative	0.02% Sodium azide
Stabilizer	50% Glycerol
Storage instruction	For continuous use, store undiluted antibody at 2-8°C for up to a week. For long-term storage, aliquot and store at -20°C. Storage in frost free freezers is not recommended. Avoid repeated freeze/thaw cycles. Suggest spin the vial prior to opening. The antibody solution should be gently mixed before use.
Note	For laboratory research only, not for drug, diagnostic or other use.

Bioinformation

Database links	GeneID: 19216 Mouse Swiss-port # P35375 Mouse
Gene Symbol	PTGER1
Gene Full Name	prostaglandin E receptor 1 (subtype EP1), 42kDa
Background	The protein encoded by this gene is a member of the G protein-coupled receptor family. This protein is one of four receptors identified for prostaglandin E2 (PGE2). Through a phosphatidylinositol-calcium second messenger system, G-Q proteins mediate this receptor's activity. Knockout studies in mice suggested a role of this receptor in mediating algia and in regulation of blood pressure. Studies in mice also suggested that this gene may mediate adrenocorticotrophic hormone response to bacterial endotoxin. [provided by RefSeq, Jul 2008]
Function	Receptor for prostaglandin E2 (PGE2). The activity of this receptor is mediated by G(q) proteins which activate a phosphatidylinositol-calcium second messenger system. May play a role as an important modulator of renal function. Implicated the smooth muscle contractile response to PGE2 in various tissues. [UniProt]
Research Area	Signaling Transduction antibody
Calculated Mw	42 kDa
PTM	Phosphorylated.

Images



ARG55478 anti-Prostaglandin E Receptor EP1 antibody WB image

Western blot: Romas cell lysate stained with ARG55478 anti-Prostaglandin E Receptor EP1 antibody.