

## ARG55456 anti-DNase I antibody

Package: 100 µl  
Store at: -20°C

### Summary

Product Description	Rabbit Polyclonal antibody recognizes DNase I
Tested Reactivity	Hu, Ms
Tested Application	WB
Host	Rabbit
Clonality	Polyclonal
Isotype	IgG
Target Name	DNase I
Species	Human
Immunogen	KLH-conjugated synthetic peptide corresponding to aa. 87-121 (Center) of Human DNase I.
Conjugation	Un-conjugated
Alternate Names	DNase I; Deoxyribonuclease-1; DNL1; DRNI; Deoxyribonuclease I; Dornase alfa; EC 3.1.21.1

### Application Instructions

Application table	Application	Dilution
	WB	1:1000
Application Note	* The dilutions indicate recommended starting dilutions and the optimal dilutions or concentrations should be determined by the scientist.	
Positive Control	Mouse kidney	

### Properties

Form	Liquid
Purification	Purification with Protein A and immunogen peptide.
Buffer	PBS and 0.09% (W/V) Sodium azide
Preservative	0.09% (W/V) Sodium azide
Storage instruction	For continuous use, store undiluted antibody at 2-8°C for up to a week. For long-term storage, aliquot and store at -20°C or below. Storage in frost free freezers is not recommended. Avoid repeated freeze/thaw cycles. Suggest spin the vial prior to opening. The antibody solution should be gently mixed before use.
Note	For laboratory research only, not for drug, diagnostic or other use.

### Bioinformation

Database links	<a href="#">GeneID: 13419 Mouse</a>
----------------	-------------------------------------

[GeneID: 1773 Human](#)

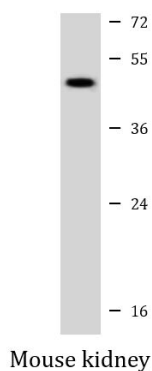
[Swiss-port # P24855 Human](#)

[Swiss-port # P49183 Mouse](#)

Gene Symbol	DNASE1
Gene Full Name	deoxyribonuclease I
Background	This gene encodes a member of the DNase family. This protein is stored in the zymogen granules of the nuclear envelope and functions by cleaving DNA in an endonucleolytic manner. At least six autosomal codominant alleles have been characterized, DNASE1*1 through DNASE1*6, and the sequence of DNASE1*2 represented in this record. Mutations in this gene have been associated with systemic lupus erythematosus (SLE), an autoimmune disease. A recombinant form of this protein is used to treat the one of the symptoms of cystic fibrosis by hydrolyzing the extracellular DNA in sputum and reducing its viscosity. Alternate transcriptional splice variants of this gene have been observed but have not been thoroughly characterized. [provided by RefSeq, Jul 2008]
Function	Among other functions, seems to be involved in cell death by apoptosis. Binds specifically to G-actin and blocks actin polymerization (By similarity). [UniProt]
Research Area	Cancer antibody; Cell Biology and Cellular Response antibody; Cell Death antibody; Gene Regulation antibody; Metabolism antibody
Calculated Mw	31 kDa
Cellular Localization	Secreted. Nucleus envelope. Note=Secretory protein, stored in zymogen granules and found in the nuclear envelope

## Images

---



ARG55456 anti-DNase I antibody WB image

Western blot: 20 µg of Mouse kidney lysate stained with ARG55456 anti-DNase I antibody at 1:1000 dilution.