

ARG55454 anti-TIM50 antibody

Package: 100 µl
Store at: -20°C

Summary

Product Description	Rabbit Polyclonal antibody recognizes TIM50
Tested Reactivity	Hu
Tested Application	WB
Host	Rabbit
Clonality	Polyclonal
Isotype	IgG
Target Name	TIM50
Species	Human
Immunogen	KLH-conjugated synthetic peptide corresponding to aa. 25-56 (N-terminus) of Human TIM50.
Conjugation	Un-conjugated
Alternate Names	TIM50L; Mitochondrial import inner membrane translocase subunit TIM50; TIM50

Application Instructions

Application table	Application	Dilution
	WB	1:1000
Application Note	* The dilutions indicate recommended starting dilutions and the optimal dilutions or concentrations should be determined by the scientist.	
Positive Control	HeLa	

Properties

Form	Liquid
Purification	Purification with Protein A and immunogen peptide.
Buffer	PBS and 0.09% (W/V) Sodium azide
Preservative	0.09% (W/V) Sodium azide
Storage instruction	For continuous use, store undiluted antibody at 2-8°C for up to a week. For long-term storage, aliquot and store at -20°C or below. Storage in frost free freezers is not recommended. Avoid repeated freeze/thaw cycles. Suggest spin the vial prior to opening. The antibody solution should be gently mixed before use.
Note	For laboratory research only, not for drug, diagnostic or other use.

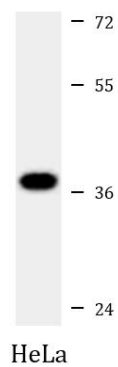
Bioinformation

Database links	GeneID: 92609 Human
----------------	-------------------------------------

[Swiss-port # Q3ZCQ8 Human](#)

Gene Symbol	TIMM50
Gene Full Name	translocase of inner mitochondrial membrane 50 homolog (<i>S. cerevisiae</i>)
Function	Essential component of the TIM23 complex, a complex that mediates the translocation of transit peptide-containing proteins across the mitochondrial inner membrane. Has some phosphatase activity in vitro; however such activity may not be relevant in vivo. Isoform 2 may participate in the release of snRNPs and SMN from the Cajal body. [UniProt]
Research Area	Metabolism antibody; Signaling Transduction antibody
Calculated Mw	40 kDa
Cellular Localization	Mitochondrion inner membrane; Single-pass membrane protein

Images



ARG55454 anti-TIM50 antibody WB image

Western blot: 35 µg of HeLa cell lysate stained with ARG55454 anti-TIM50 antibody at 1:1000 dilution.