

ARG55435 anti-DRD2 / Dopamine Receptor D2 antibody

Package: 100 µl
Store at: -20°C

Summary

Product Description	Rabbit Polyclonal antibody recognizes DRD2 / Dopamine Receptor D2
Tested Reactivity	Hu, Ms
Tested Application	WB
Host	Rabbit
Clonality	Polyclonal
Isotype	IgG
Target Name	DRD2 / Dopamine Receptor D2
Species	Human
Immunogen	KLH-conjugated synthetic peptide corresponding to aa. 307-336 (C-terminus) of Human DRD2.
Conjugation	Un-conjugated
Alternate Names	D2R; D2DR; D(2) dopamine receptor; Dopamine D2 receptor

Application Instructions

Application table	Application	Dilution
	WB	1:1000
Application Note	* The dilutions indicate recommended starting dilutions and the optimal dilutions or concentrations should be determined by the scientist.	
Positive Control	Human brain	

Properties

Form	Liquid
Purification	Purification with Protein A and immunogen peptide
Buffer	PBS and 0.09% (W/V) Sodium azide
Preservative	0.09% (W/V) Sodium azide
Storage instruction	For continuous use, store undiluted antibody at 2-8°C for up to a week. For long-term storage, aliquot and store at -20°C or below. Storage in frost free freezers is not recommended. Avoid repeated freeze/thaw cycles. Suggest spin the vial prior to opening. The antibody solution should be gently mixed before use.
Note	For laboratory research only, not for drug, diagnostic or other use.

Bioinformation

Database links	GeneID: 13489 Mouse
----------------	-------------------------------------

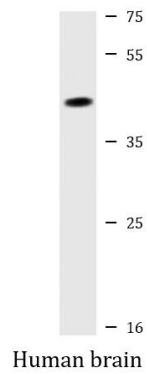
[GeneID: 1813 Human](#)

[Swiss-port # P14416 Human](#)

[Swiss-port # P61168 Mouse](#)

Gene Symbol	DRD2
Gene Full Name	dopamine receptor D2
Background	This gene encodes the D2 subtype of the dopamine receptor. This G-protein coupled receptor inhibits adenylyl cyclase activity. A missense mutation in this gene causes myoclonus dystonia; other mutations have been associated with schizophrenia. Alternative splicing of this gene results in two transcript variants encoding different isoforms. A third variant has been described, but it has not been determined whether this form is normal or due to aberrant splicing. [provided by RefSeq, Jul 2008]
Function	Dopamine receptor whose activity is mediated by G proteins which inhibit adenylyl cyclase. [UniProt]
Research Area	Neuroscience antibody; Signaling Transduction antibody
Calculated Mw	51 kDa

Images



ARG55435 anti-DRD2 / Dopamine Receptor D2 antibody WB image

Western blot: 20 µg of Human brain lysate stained with ARG55435 anti-DRD2 / Dopamine Receptor D2 antibody.